

Free –Standing Medical Office Building for Sale or Lease Duluth / Suwanee Submarket



3796 Satellite Boulevard, Duluth, GA, GA 30096

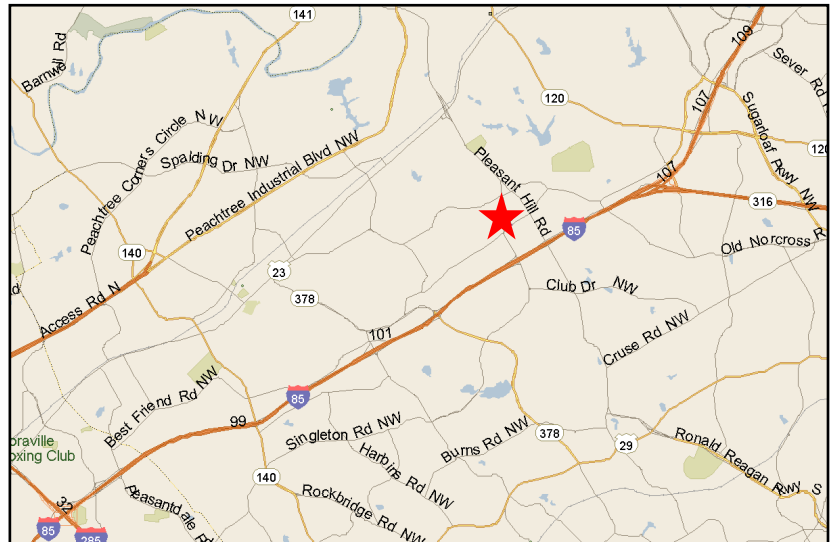
Building Size: 11,358SF

Sales Price: \$1,095,000

For Lease: +/- 3,000 SF

Lease Rate: \$17.00 - \$17.50/SF

- Perfect Property for Dental or Medical Practices
- Ideal Owner/User Investment
- Plug & Play Dental Facility Available
- Great Gwinnett Satellite Blvd. Location
- Updated Finishes with Elevator
- Brokers Protected



Ted Schwartz
404.869.2606
ted@joelandgranot.com

Renée Rosenheck
404.869.2635
renee@joelandgranot.com

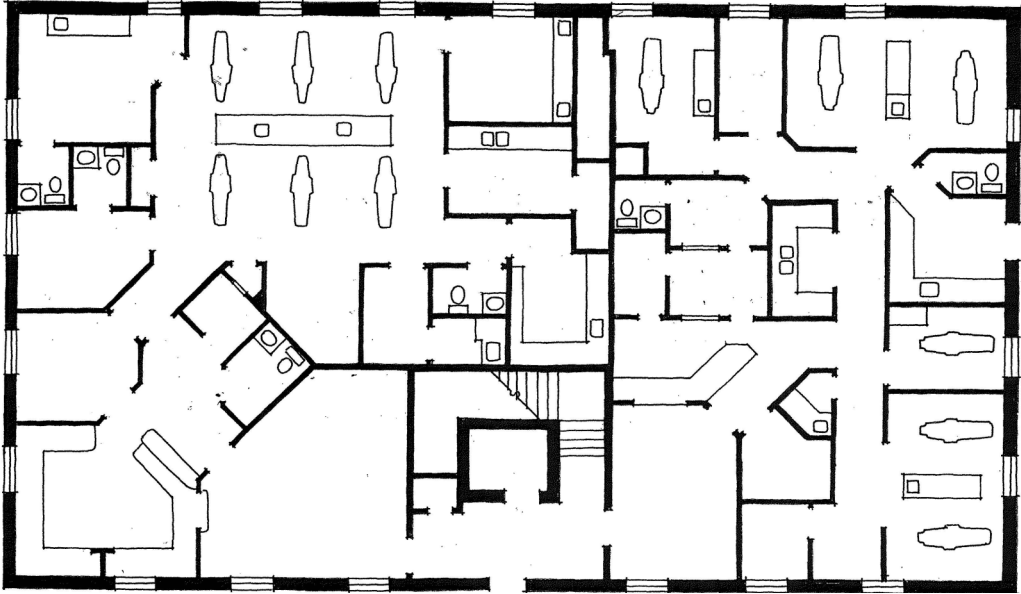
For complete details, please visit: www.joelandgranot.com



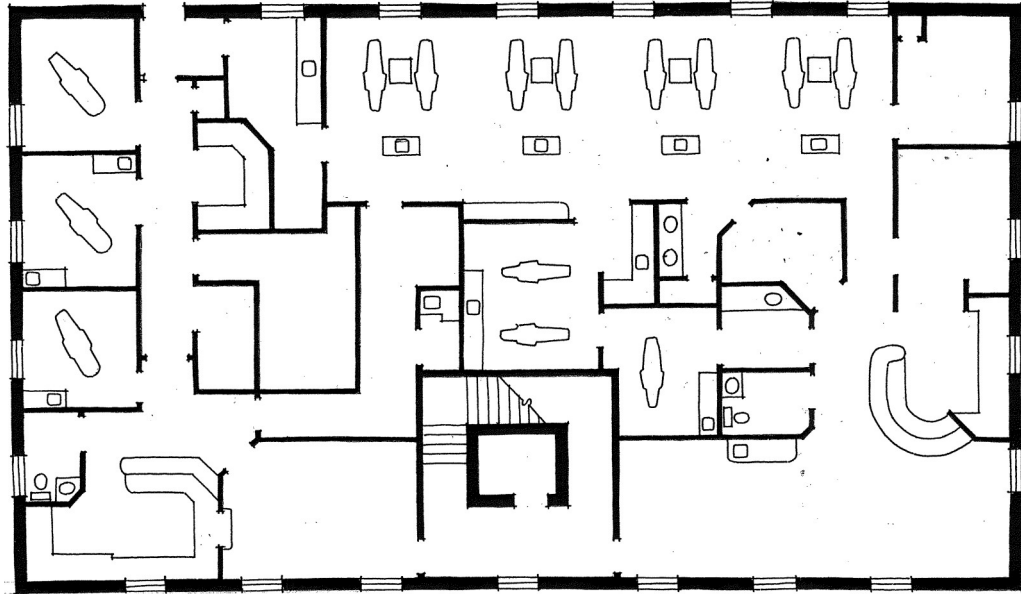
633 Antone St NW, Atlanta, GA 30318
(ph) 404.869.2600 | (fax) 404.869.2601

The information was obtained from sources we assume are reliable. We do not doubt its accuracy, however we do not guarantee it. No liability is assumed for errors and omissions. Information is subject to changes and withdrawal without notice.

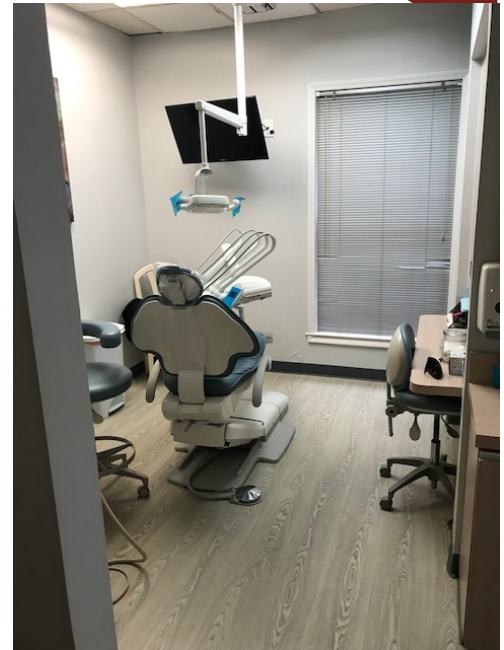
3796 Satellite Blvd. Duluth, GA 30096 Floor Plans



1st Floor, 4,437 RSF



2nd Floor, 4,437 RSF



Ted Schwartz
404.869.2606
ted@joelandgranot.com

Renée Rosenheck
404.869.2635
renee@joelandgranot.com



JOEL & GRANOT
COMMERCIAL REAL ESTATE

633 Antone St NW, Atlanta, GA 30318
(ph) 404.869.2600 | (fax) 404.869.2601

The information was obtained from sources we assume are reliable. We do not doubt its accuracy, however we do not guarantee it. No liability is assumed for errors and omissions. Information is subject to changes and withdrawal without notice.