

# AVAILABLE FOR LEASE

3,642 SF of Downtown End Cap Retail / Office / Flex Space  
Corner of Park Place & Decatur Street



**22 Park Place, Atlanta, GA 30303 - Heart of Downtown Atlanta**

**SIZE: 3,642 SF (2,572 RSF + 1,070 RSF Mezzanine)**

- End Cap Street Level Retail Access and Exposure
- Adjacent to GA State University
- Massive Amount of Foot Traffic
- MARTA Rail & Street Car Access
- Grease Trap in Place
- Mezzanine and Conference Space Available
- Located in the heart of the Opportunity Zone. For more information go to <https://www.investatlanta.com/business/bonds-incentives/opportunity-zones/>



**Dave Smith**

404.869.2605

dave@joelandgranot.com

For complete details, please visit: [www.joelandgranot.com](http://www.joelandgranot.com)

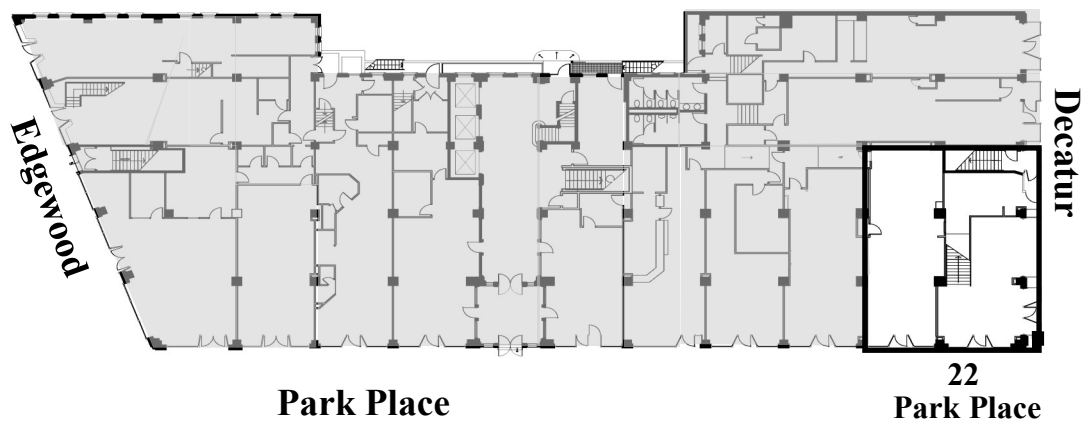
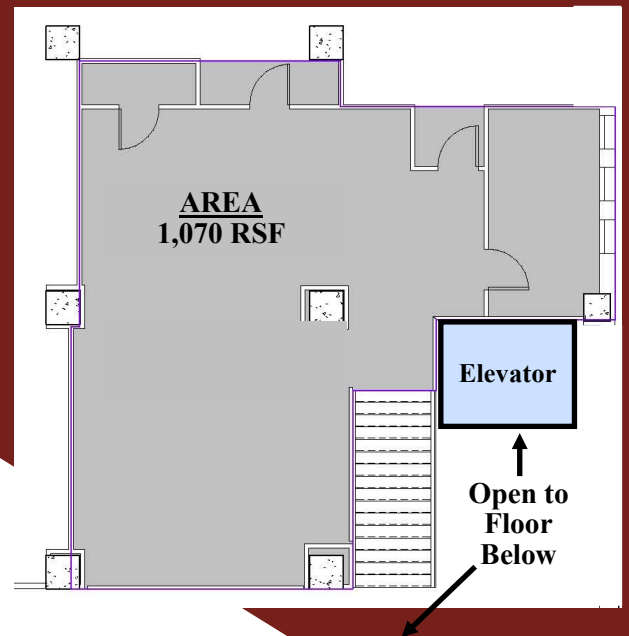
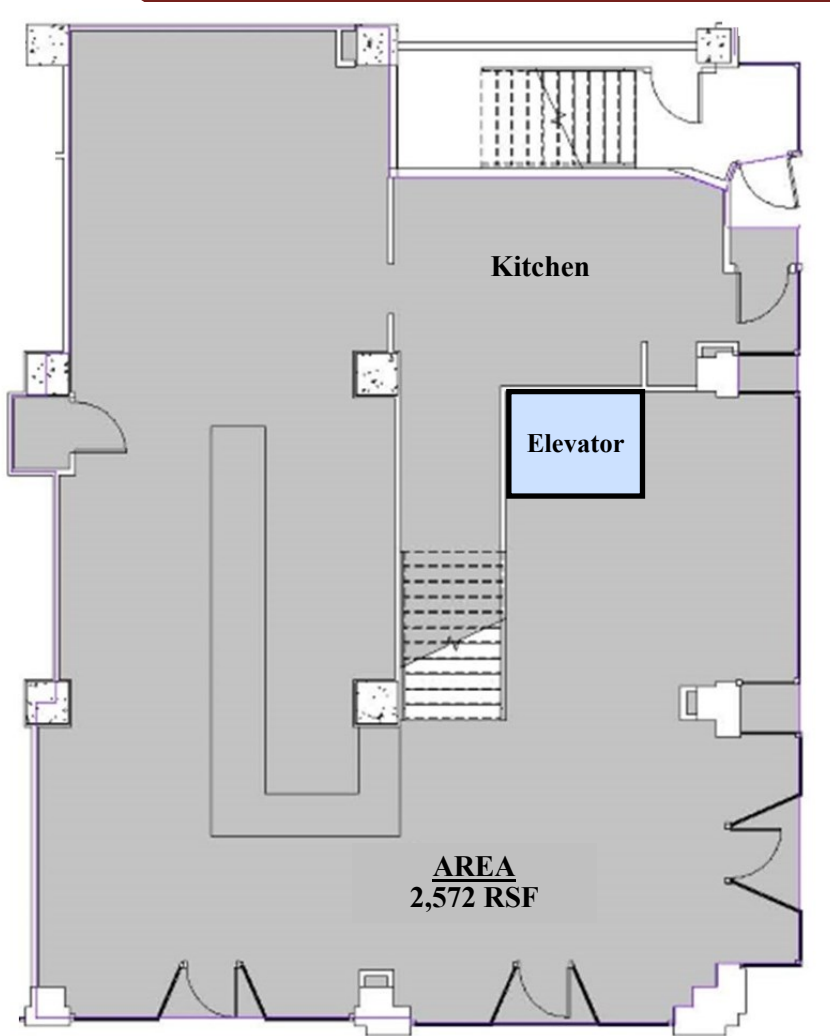


633 Antone St NW, Atlanta, GA 30318  
(ph) 404.869.2600

The information was obtained from sources we assume are reliable. We do not doubt its accuracy, however we do not guarantee it. No liability is assumed for errors and omissions. Information is subject to changes and withdrawal without notice.

# 22 Park Place, Atlanta, GA 30303

## Floor Plan



633 Antone St NW, Atlanta, GA 30318  
(ph) 404.869.2600

The information was obtained from sources we assume are reliable. We do not doubt its accuracy, however we do not guarantee it. No liability is assumed for errors and omissions. Information is subject to changes and withdrawal without notice.