

FOR LEASE: 2285 Peachtree Rd. in Buckhead

SECOND FLOOR LOFT MEDICAL / OFFICE SPACE



2285 Peachtree Road, Atlanta, GA 30309

(Just south of Peachtree Battle Shopping Center)

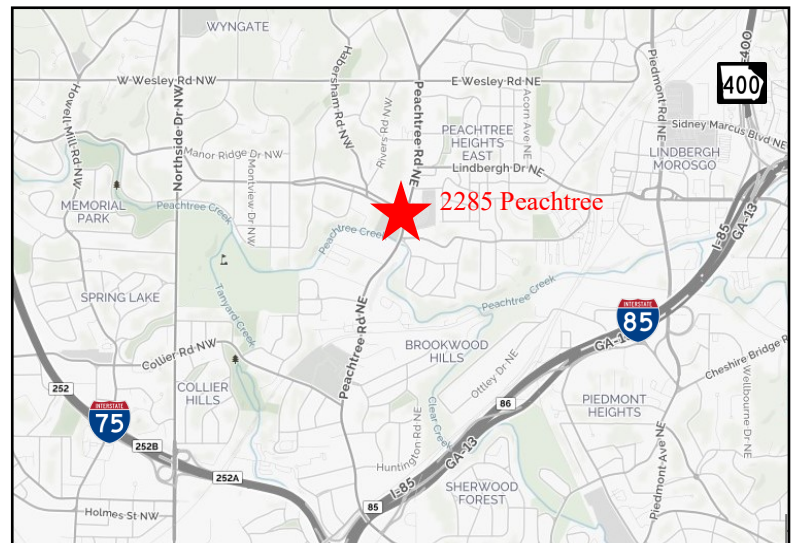
SIZE: 1,525 SF

- Great location in Buckhead with Several Restaurants and Amenities in Walking Distance
- Over 100 **FREE** covered and uncovered parking spaces
- Building and Marques Signage Available on Peachtree Rd
- **Traffic Count: 54,593 VPD** (Peachtree Road and Peachtree Battle Intersection)
- Available January 1, 2022



Drone Video

| Demographics | | |
|------------------------------|-----------|-----------|
| 0.5 Miles | 1 Mile | 2 Miles |
| 2020 Total Population | | |
| 5,881 | 17,143 | 70,447 |
| 2020 Average Income | | |
| \$136,877 | \$143,091 | \$128,623 |
| 2020 Area Employees | | |
| 8,267 | 19,032 | 76,267 |



Bill Ward

404.869.2655

bill@joelandgranot.com

For complete details, please visit: www.joelandgranot.com

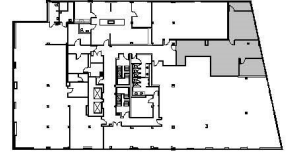


JOEL & GRANOT
COMMERCIAL REAL ESTATE

633 Antone St NW, Atlanta, GA 30318
(ph) 404.869.2600 | (fax) 404.869.2601

The information was obtained from sources we assume are reliable. We do not doubt its accuracy, however we do not guarantee it. No liability is assumed for errors and omissions. Information is subject to changes and withdrawal without notice.

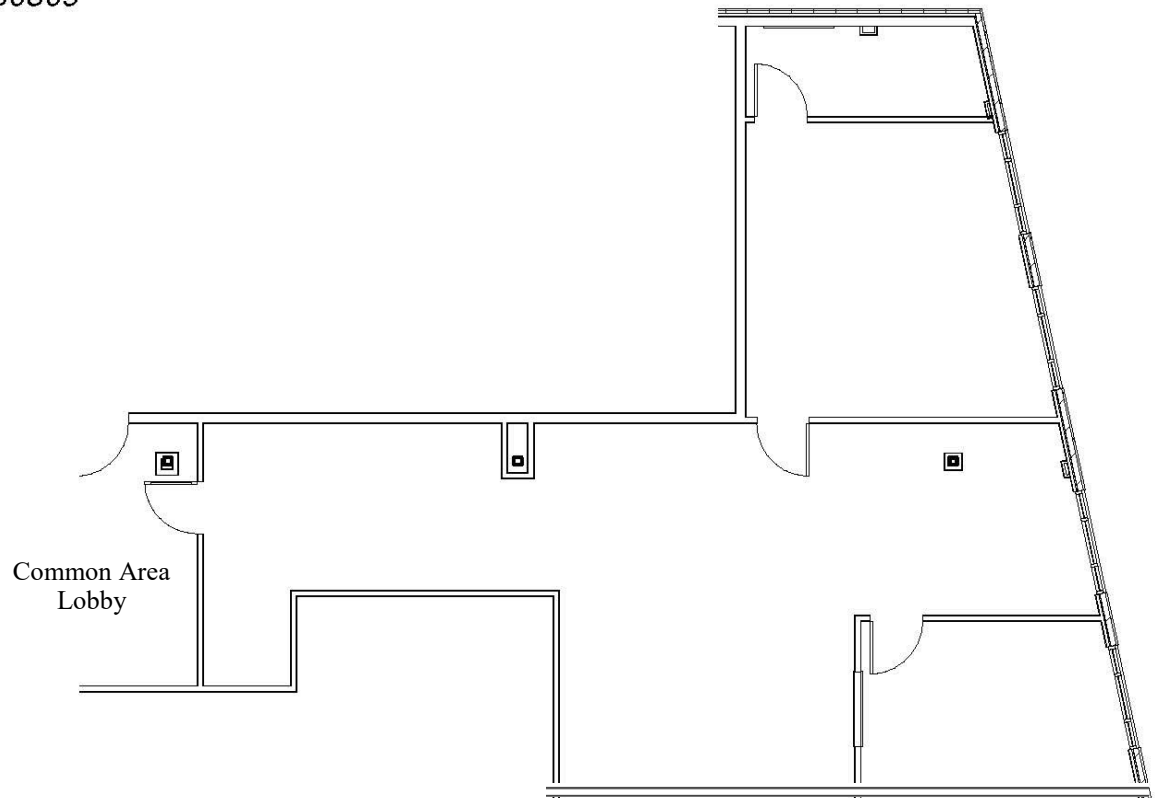
2285 PEACHTREE ROAD, ATLANTA, GA 30309
SUITE 204
1,525 RSF



② LOCATION PLAN
1" = 80'-0"

2285 PEACHTREE

2285 Peachtree Road, NE
Suite 204
Atlanta, GA 30309



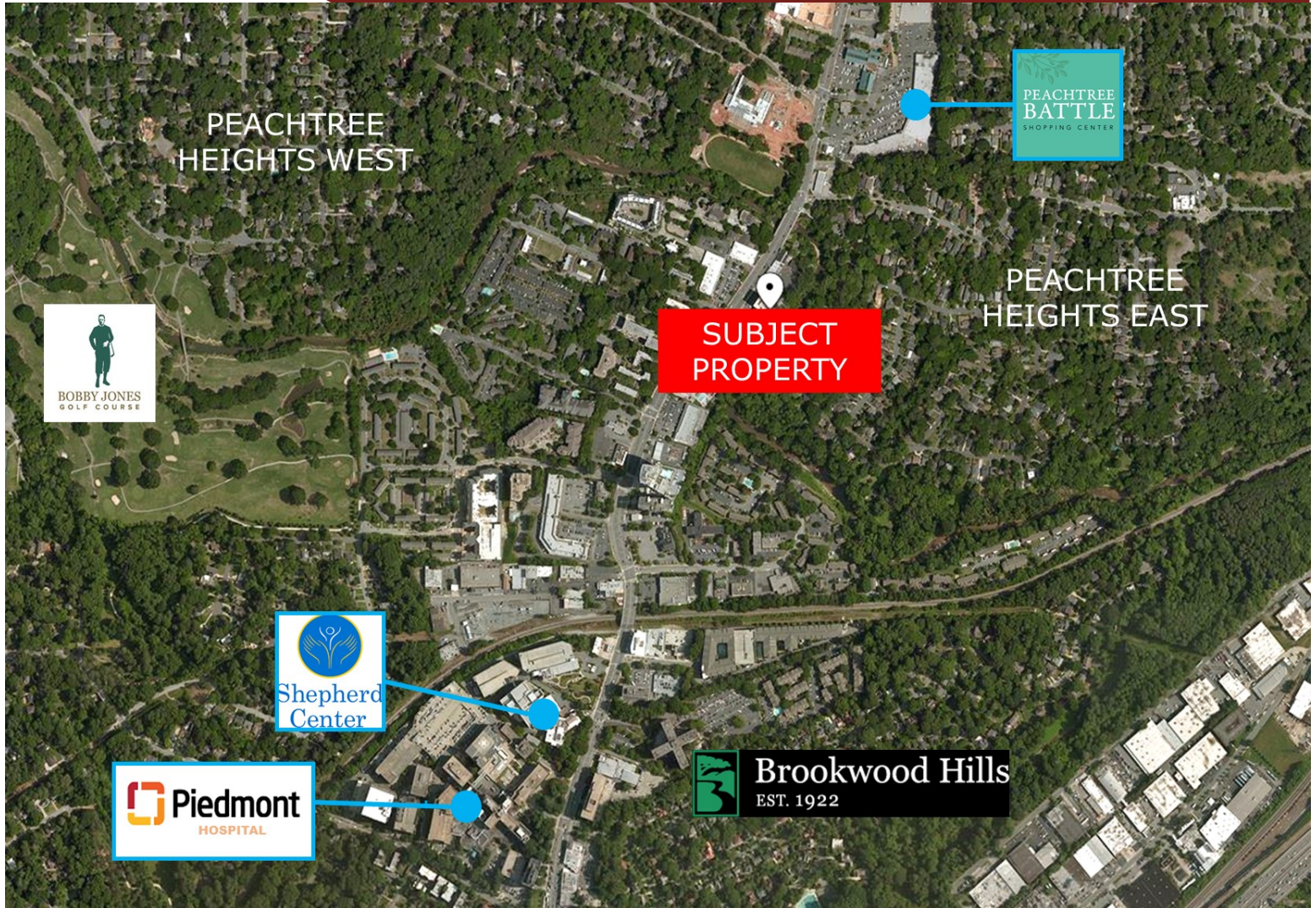
Bill Ward
404.869.2655
bill@joelandgranot.com

633 Antone St NW, Atlanta, GA 30318
(ph) 404.869.2600 | (fax) 404.869.2601



The information was obtained from sources we assume are reliable. We do not doubt its accuracy, however we do not guarantee it. No liability is assumed for errors and omissions. Information is subject to changes and withdrawal without notice.

2285 PEACHTREE ROAD, ATLANTA, GA 30309
AERIAL



Bill Ward
404.869.2655
bill@joelandgranot.com



633 Antone St NW, Atlanta, GA 30318
(ph) 404.869.2600 | (fax) 404.869.2601

The information was obtained from sources we assume are reliable. We do not doubt its accuracy, however we do not guarantee it. No liability is assumed for errors and omissions. Information is subject to changes and withdrawal without notice.