

# AVAILABLE FOR SALE OR LEASE

## 4,800 SF Office Space in North Fulton/Alpharetta



### Main Street Commons 1025 - 1045 Powers Place Alpharetta, GA 30009

**Size:** 4,800 RSF  
**Rate:** \$13.50—\$14.50/SF MG  
**Sales Price:** \$550,000

- Close to Downtown Alpharetta
- Great Visibility
- Convenient Location with Easy Access to Alpharetta Highway
- Available with 60 Days' Notice



**Ted Schwartz**  
404.869.2606  
ted@joelandgranot.com

**Renée Rosenheck**  
404.869.2635  
renee@joelandgranot.com

For complete details, please visit: [www.joelandgranot.com](http://www.joelandgranot.com)



633 Antone St NW Atlanta, GA 30318  
(ph) 404.869.2600 | [www.joelandgranot.com](http://www.joelandgranot.com)

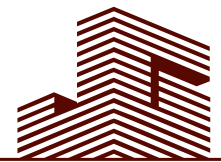
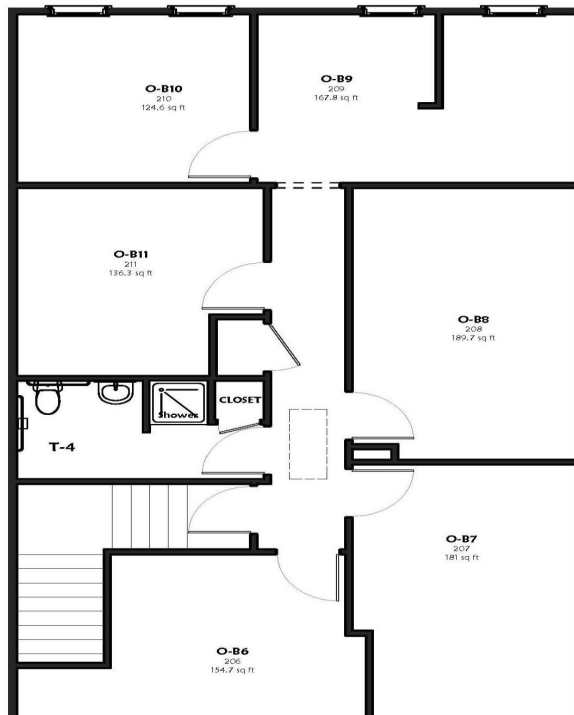
The information was obtained from sources we assume are reliable. We do not doubt its accuracy, however we do not guarantee it. No liability is assumed for errors and omissions. Information is subject to changes and withdrawal without notice.

# Main Street Commons 1025 - 1045 Powers Place Alpharetta, GA 30009 4,800 RSF

1st Floor, 3,600 RSF



2nd Floor, 1,200 RSF



**JOEL & GRANOT**  
COMMERCIAL REAL ESTATE

633 Antone St NW Atlanta, GA 30318  
(ph) 404.869.2600 | [www.joelandgranot.com](http://www.joelandgranot.com)

The information was obtained from sources we assume are reliable. We do not doubt its accuracy, however we do not guarantee it. No liability is assumed for errors and omissions. Information is subject to changes and withdrawal without notice.