

# AVAILABLE - 2,006 UP TO 3,356 RSF

## ROSWELL/NORTH FULTON OFFICE SPACE FOR LEASE



**PAVILION CENTER**  
**9755 Dogwood Road**  
**Roswell, GA 30075**

**LEASE RATE: \$18.25 - \$18.75/SF**  
**SIZE: 2,006 TO 3,356 RSF**

- Ideal for Growing and Emerging Companies
- Shared Conference Room Available
- Ample Parking at 4/1,000 RSF
- Convenient Access to GA 400



**Ted Schwartz**  
404.869.2606  
ted@joelandgranot.com

**Renée Rosenheck**  
404.869.2635  
renee@joelandgranot.com

For complete details, please visit: [www.joelandgranot.com](http://www.joelandgranot.com)

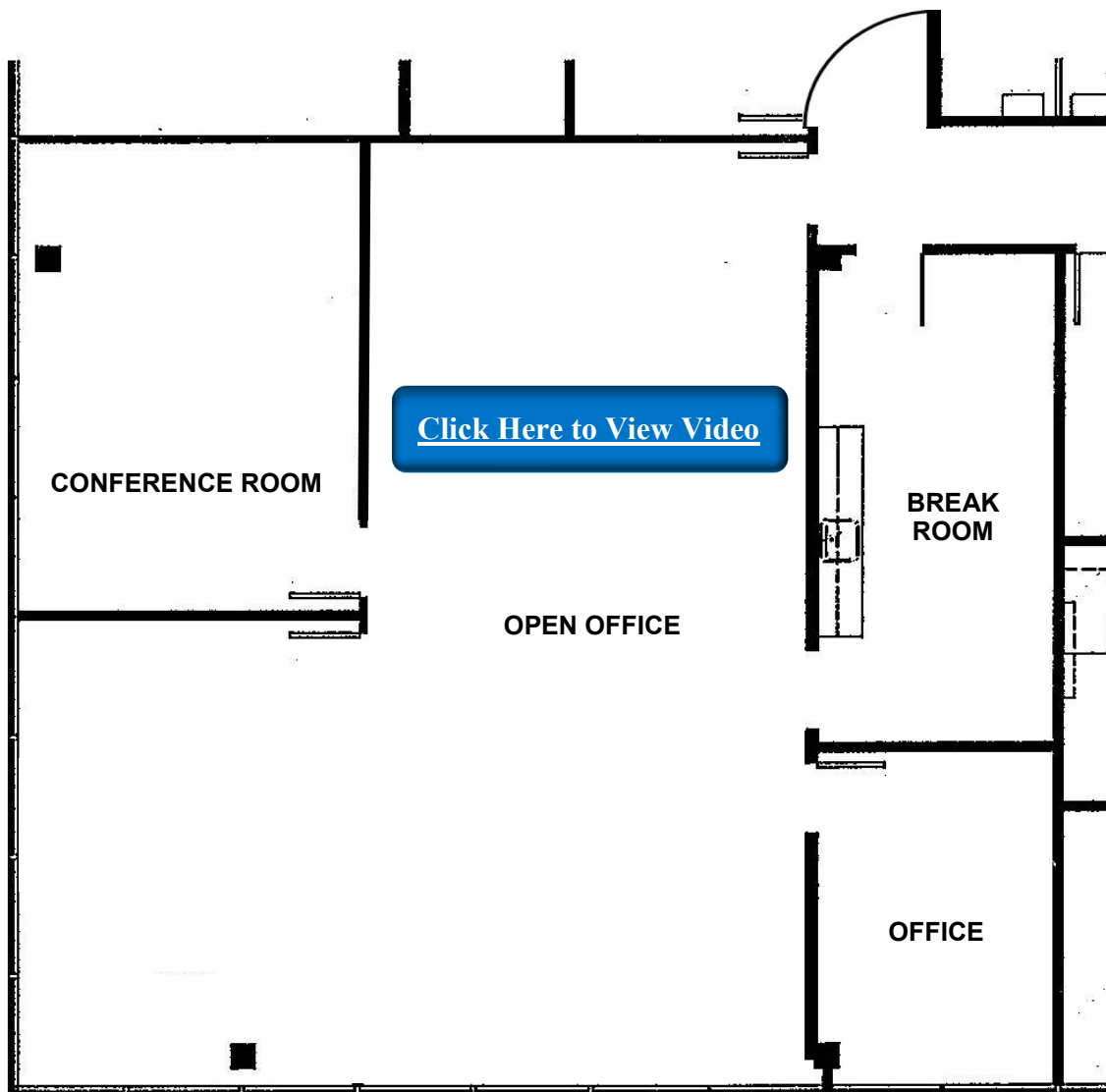
633 Antone St NW, Atlanta, GA 30318  
(ph) 404.869.2600



The information was obtained from sources we assume are reliable. We do not doubt its accuracy, however we do not guarantee it. No liability is assumed for errors and omissions. Information is subject to changes and withdrawal without notice.

**PAVILION CENTER**  
**9755 Dogwood Road**  
**Roswell, GA 30075**  
**Suite 120**  
**2,006 RSF**

*Ready to Go Space with Open Floor Plan*



**Ted Schwartz**  
404.869.2606  
ted@joelandgranot.com

**Renée Rosenheck**  
404.869.2635  
renee@joelandgranot.com

For complete details, please visit: [www.joelandgranot.com](http://www.joelandgranot.com)

633 Antone St NW, Atlanta, GA 30318  
(ph) 404.869.2600

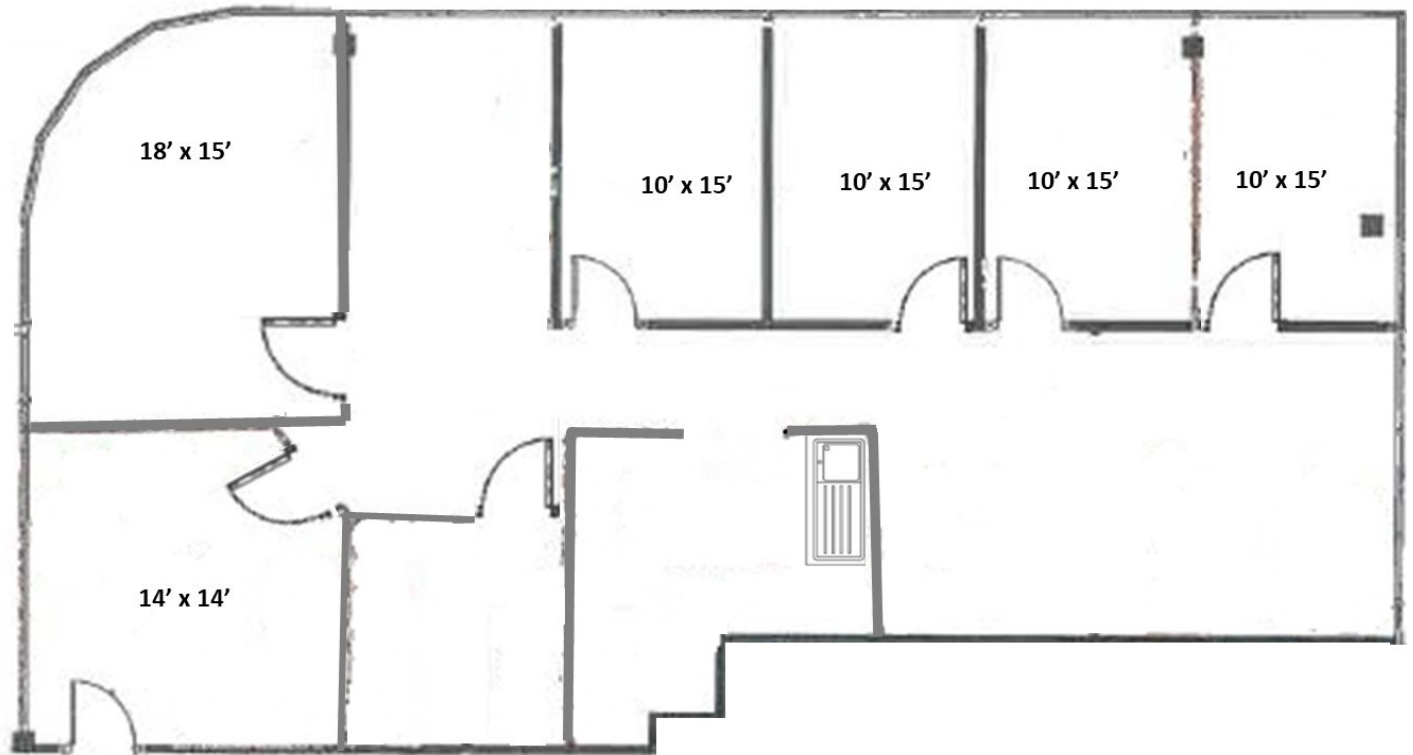


**JOEL & GRANOT**  
COMMERCIAL REAL ESTATE

The information was obtained from sources we assume are reliable. We do not doubt its accuracy, however we do not guarantee it. No liability is assumed for errors and omissions. Information is subject to changes and withdrawal without notice.

**PAVILION CENTER**  
**9755 Dogwood Road**  
**Roswell, GA 30075**  
**Suite 110**  
**2,297 RSF**

*Ready to Go Space with Open Floor Plan*



**Ted Schwartz**  
404.869.2606  
ted@joelandgranot.com

**Renée Rosenheck**  
404.869.2635  
renee@joelandgranot.com

For complete details, please visit: [www.joelandgranot.com](http://www.joelandgranot.com)

633 Antone St NW, Atlanta, GA 30318  
(ph) 404.869.2600

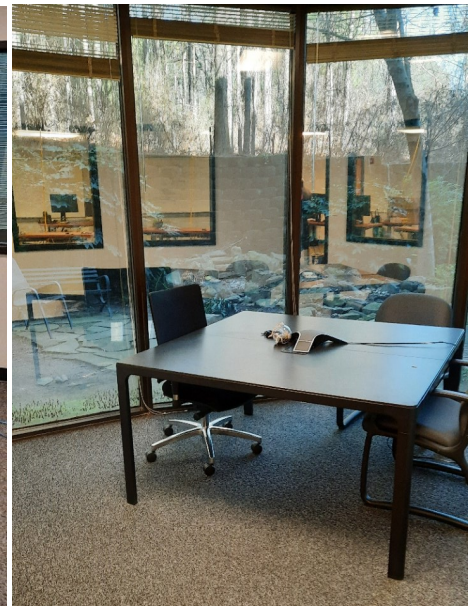
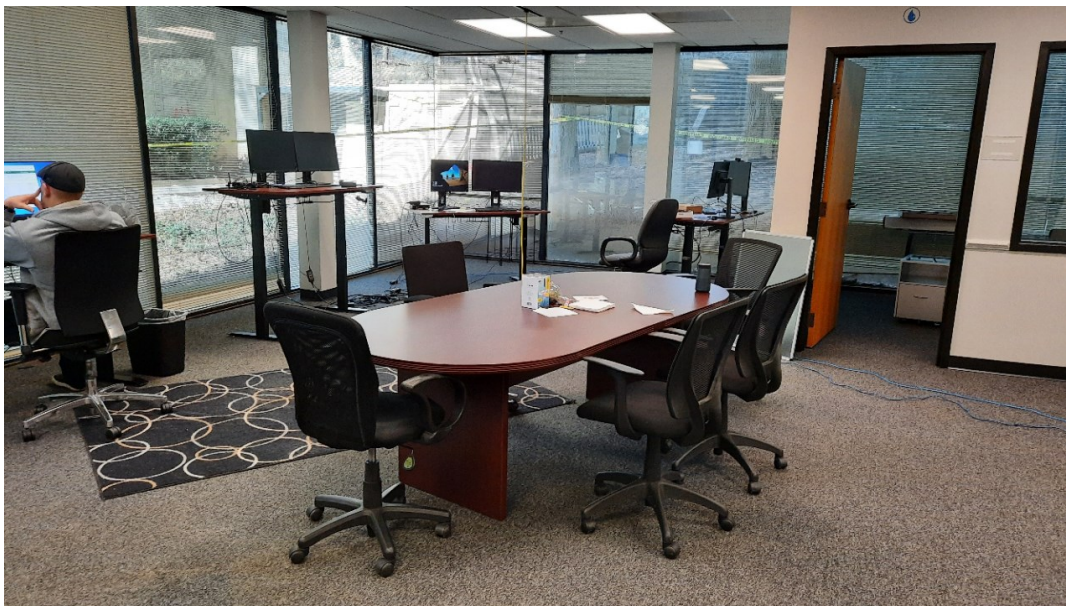
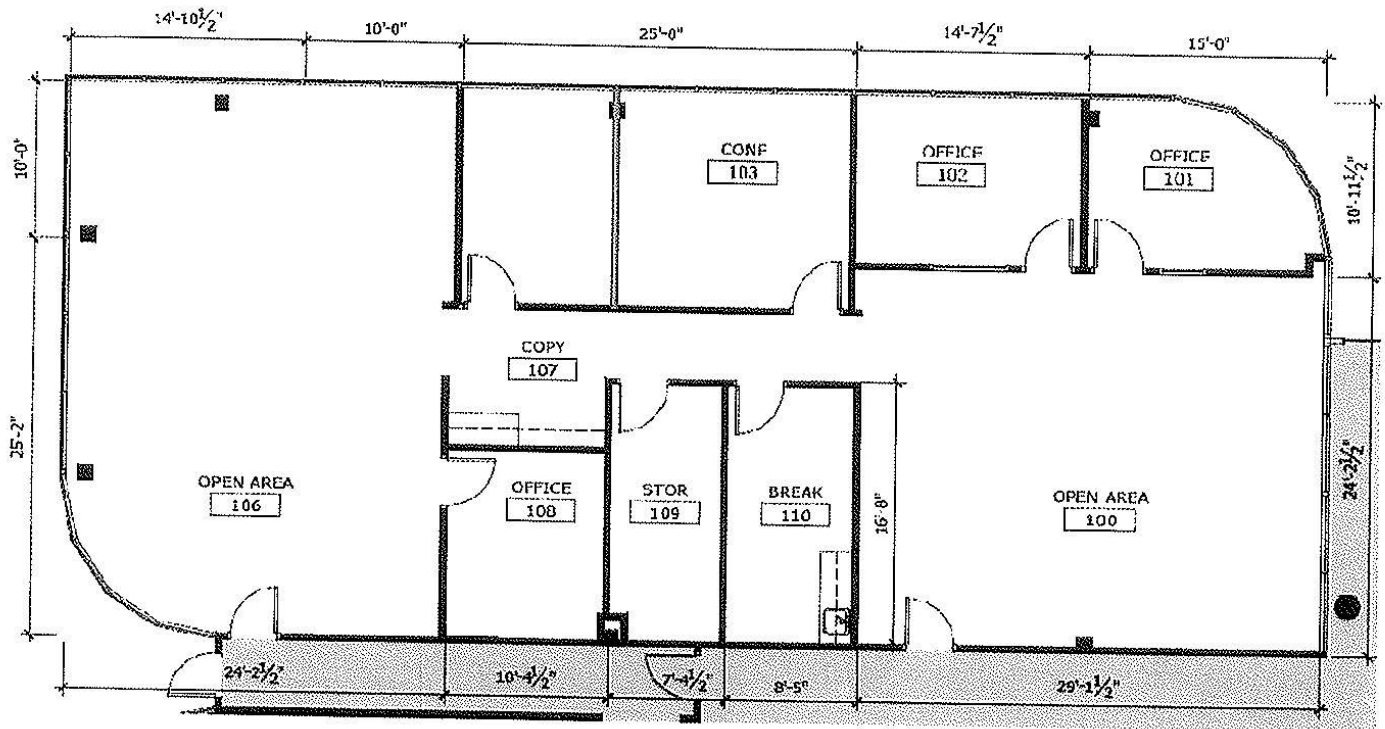


**JOEL & GRANOT**  
COMMERCIAL REAL ESTATE

The information was obtained from sources we assume are reliable. We do not doubt its accuracy, however we do not guarantee it. No liability is assumed for errors and omissions. Information is subject to changes and withdrawal without notice.



**PAVILION CENTER**  
**9755 Dogwood Road**  
**Roswell, GA 30075**  
**Suite 150**  
**3,166 RSF**



**Ted Schwartz**  
 404.869.2606

**Renée Rosenheck**  
 404.869.2635

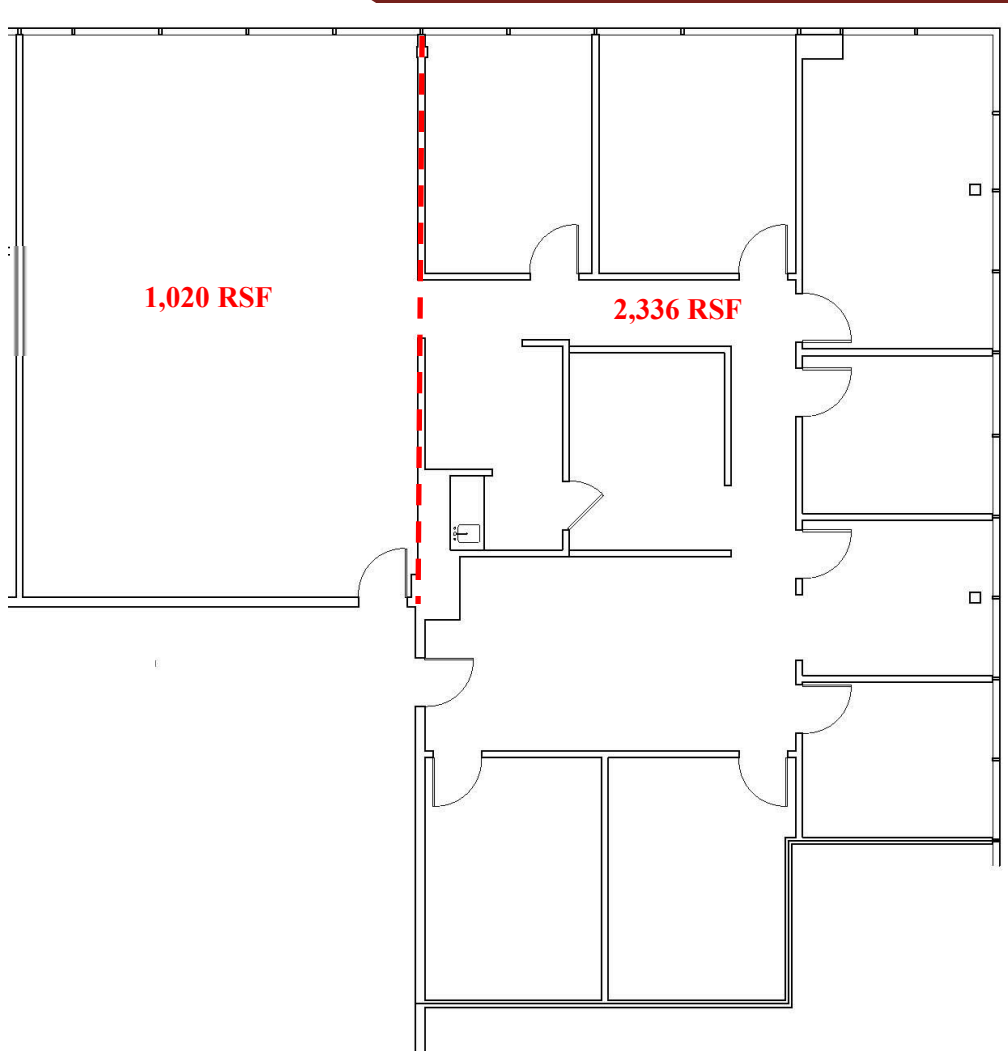
For complete details, please visit: [www.joelandgranot.com](http://www.joelandgranot.com)

633 Antone St NW, Atlanta, GA 30318  
 (ph) 404.869.2600



The information was obtained from sources we assume are reliable. We do not doubt its accuracy, however we do not guarantee it. No liability is assumed for errors and omissions. Information is subject to changes and withdrawal without notice.

**PAVILION CENTER**  
**9755 Dogwood Road**  
**Roswell, GA 30075**  
**Suite 340**  
**3,356 RSF**  
**(CAN BE SUBDIVIDED TO 1,020 SF)**



**Ted Schwartz**  
404.869.2606  
ted@joelandgranot.com

**Renée Rosenheck**  
404.869.2635  
renee@joelandgranot.com

For complete details, please visit: [www.joelandgranot.com](http://www.joelandgranot.com)

633 Antone St NW, Atlanta, GA 30318  
(ph) 404.869.2600



The information was obtained from sources we assume are reliable. We do not doubt its accuracy, however we do not guarantee it. No liability is assumed for errors and omissions. Information is subject to changes and withdrawal without notice.