

AVAILABLE

Alpharetta Medical / Office Building for Sale



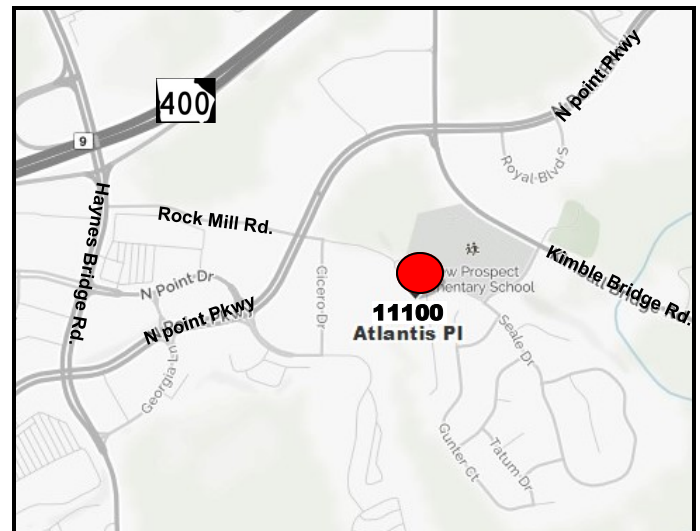
Free Standing Building at Main Entrance

Charleston Gate
11100 Atlantis Place
Alpharetta, GA 30022

Size: 8,000 RSF + 4,000 SF Recreation, Breakroom, Storage Space

Price: \$1,200,000 or Make an Offer

- Located within 1 mile of Haynes Bridge Rd and GA 400 and less than 1/4 mile off of north Point Pkwy.
- Complex is comprised of 6 office buildings designed to reflect Charleston architecture.



Ted Schwartz
404.869.2606
ted@joelandgranot.com

Renée Rosenheck
404.869.2635
renee@joelandgranot.com

For complete details, please visit: www.joelandgranot.com

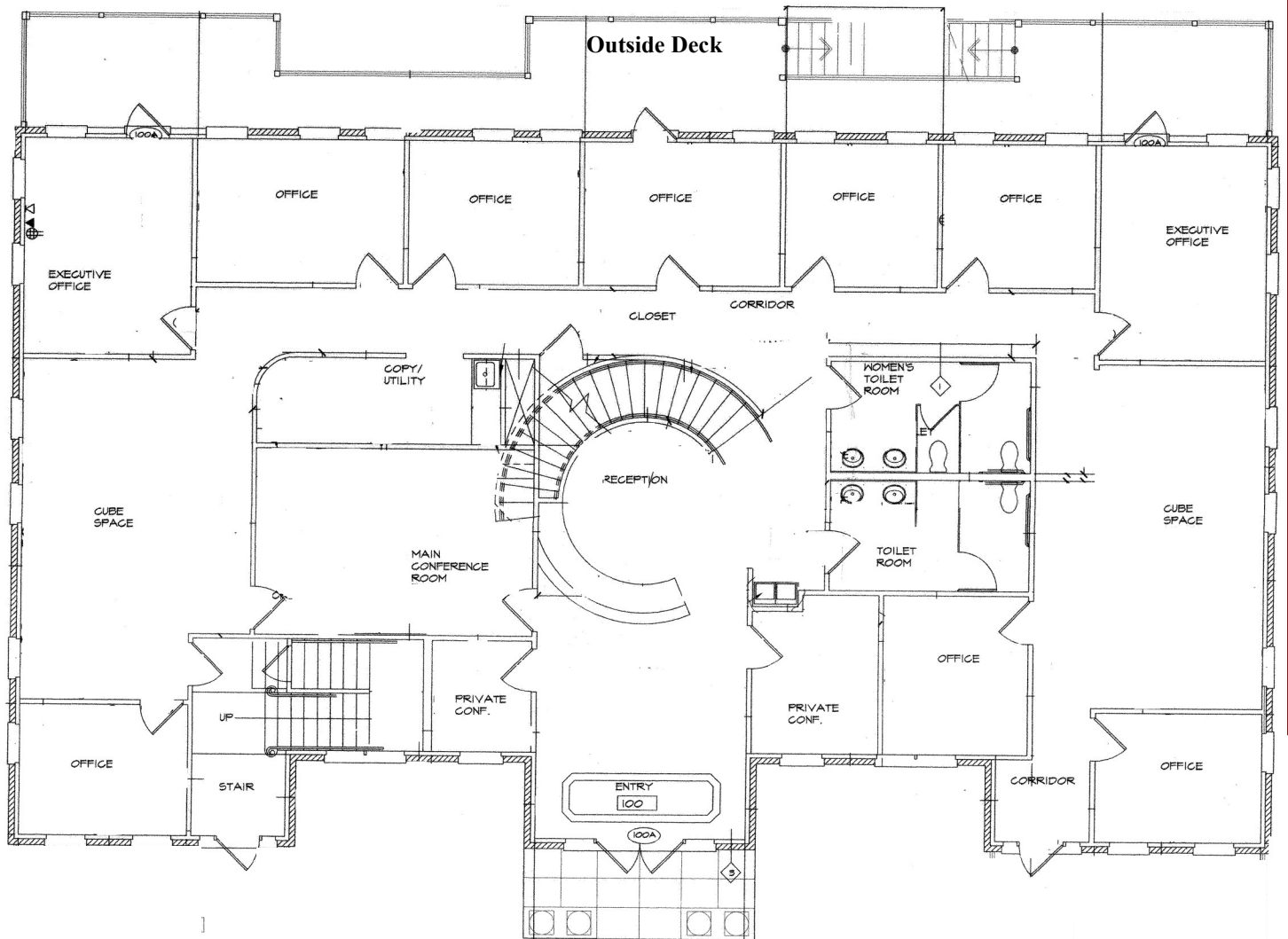
633 Antone St NW, Atlanta, GA 30318
(ph) 404.869.2600


JOEL & GRANOT
COMMERCIAL REAL ESTATE

The information was obtained from sources we assume are reliable. We do not doubt its accuracy, however we do not guarantee it. No liability is assumed for errors and omissions. Information is subject to changes and withdrawal without notice.

11100 Atlantis Place

First Floor



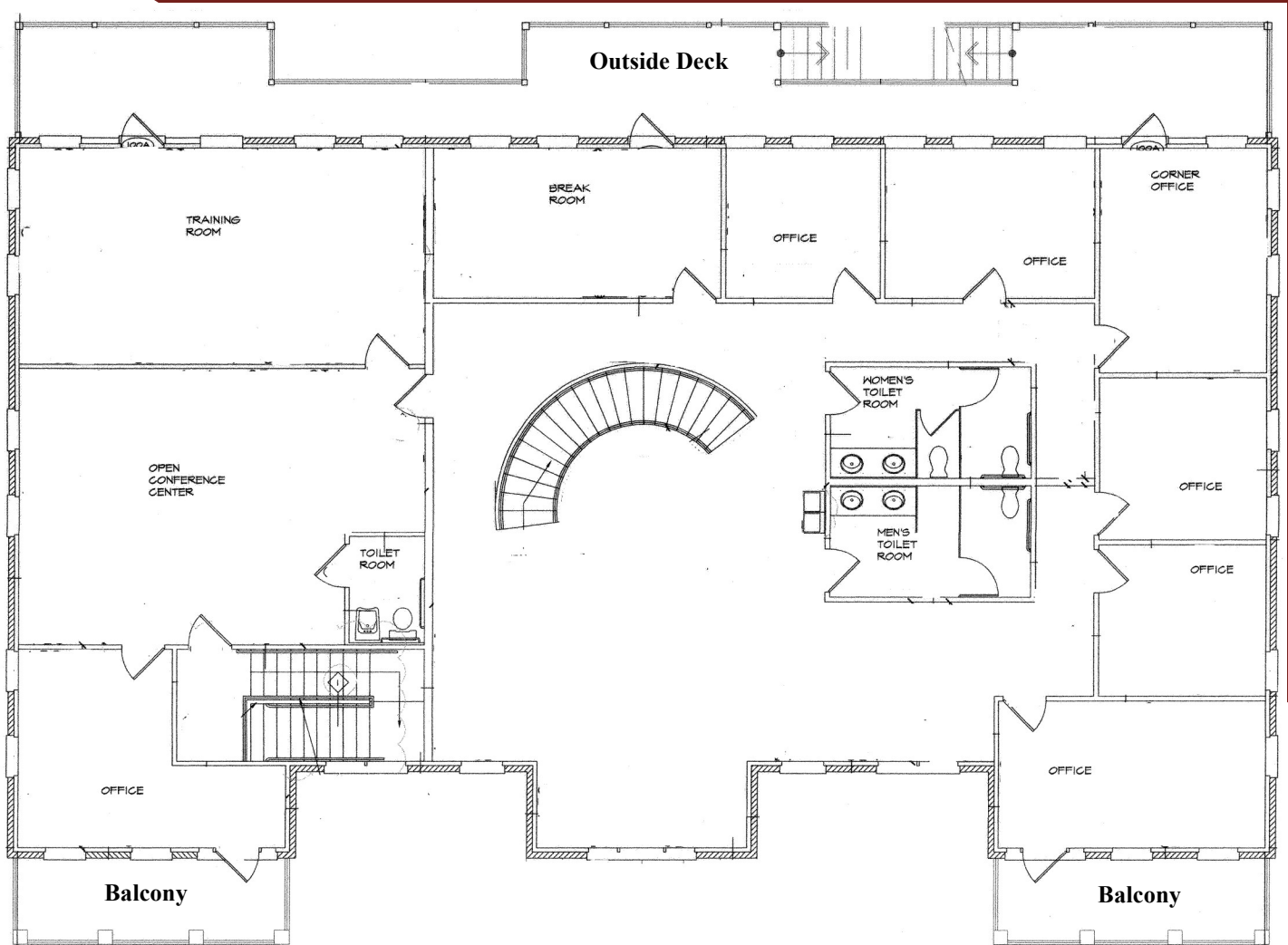
JOEL & GRANOT
COMMERCIAL REAL ESTATE

633 Antone St NW, Atlanta, GA 30318
(ph) 404.869.2600

The information was obtained from sources we assume are reliable. We do not doubt its accuracy, however we do not guarantee it. No liability is assumed for errors and omissions. Information is subject to changes and withdrawal without notice.

11100 Atlantis Place

Second Floor



Ted Schwartz
404.869.2606
ted@joelandgranot.com

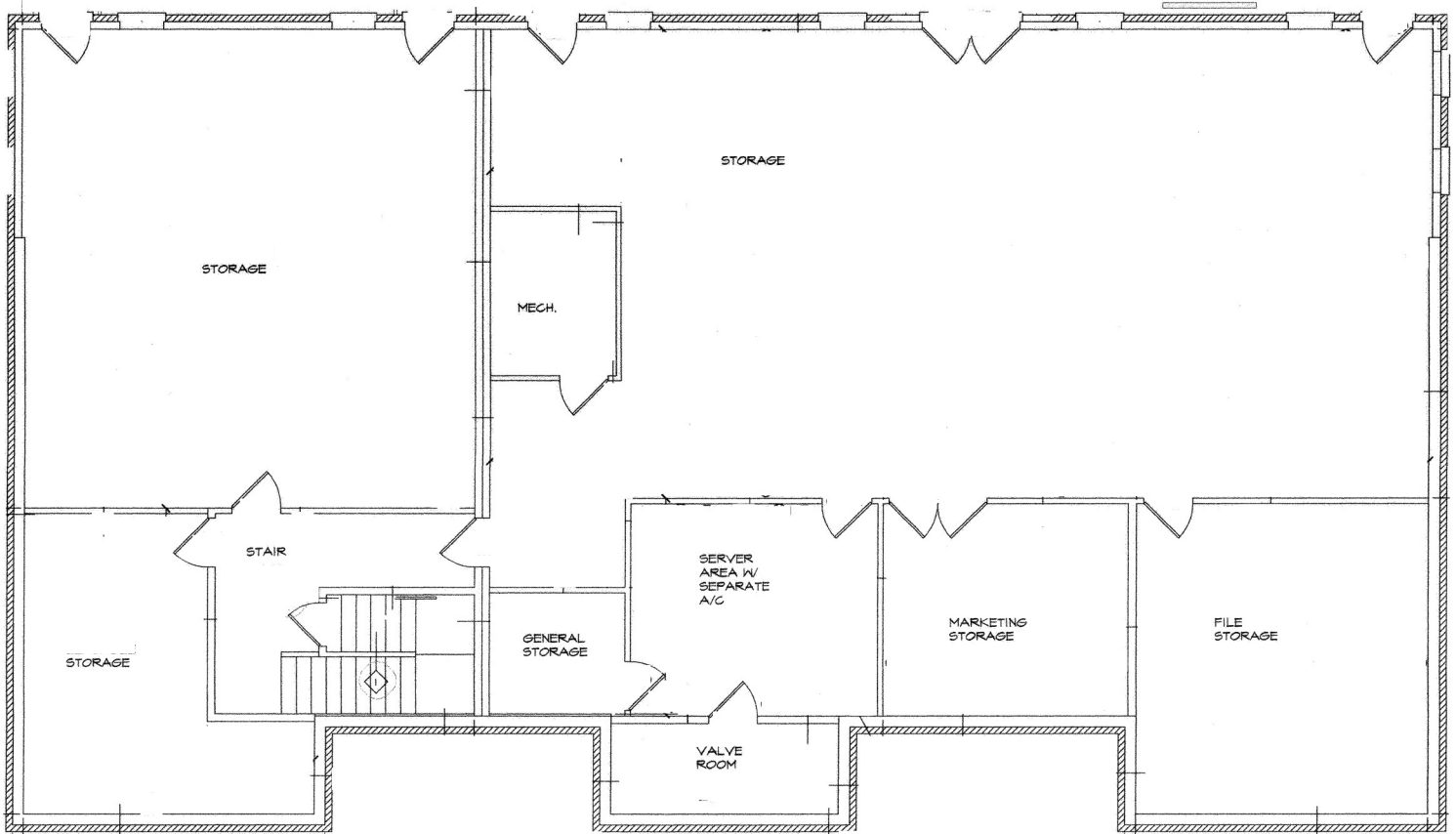
Renée Rosenheck
404.869.2635
renee@joelandgranot.com

633 Antone St NW, Atlanta, GA 30318
(ph) 404.869.2600

The information was obtained from sources we assume are reliable. We do not doubt its accuracy, however we do not guarantee it. No liability is assumed for errors and omissions. Information is subject to changes and withdrawal without notice.

11100 Atlantis Place

Terrace Level



Ted Schwartz
404.869.2606
ted@joelandgranot.com

Renée Rosenheck
404.869.2635
renee@joelandgranot.com

633 Antone St NW, Atlanta, GA 30318
(ph) 404.869.2600

The information was obtained from sources we assume are reliable. We do not doubt its accuracy, however we do not guarantee it. No liability is assumed for errors and omissions. Information is subject to changes and withdrawal without notice.