

AVAILABLE FOR LEASE

Three-Story Midtown Office Building



1400 West Peachtree Street, Atlanta, GA 30309
(Between 17th & 18th Street)

35,712 RSF ON 1.524 ACRES

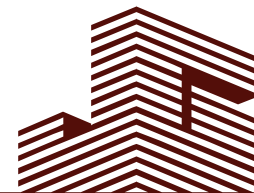
- Newly Wired for Voice and Data
- 107 Surface Parking Spaces (3.0/1,000)
- Across from MARTA Arts Center Station
- Access and Frontage on West Peachtree Street and Spring Street
- Building Signage Available



Eric W. Carlton, LEED, A.P.
404.869.2604
eric@joelandgranot.com

Alan Joel, CCIM
404.869.2602
alan@joelandgranot.com

For complete details, please visit: www.joelandgranot.com

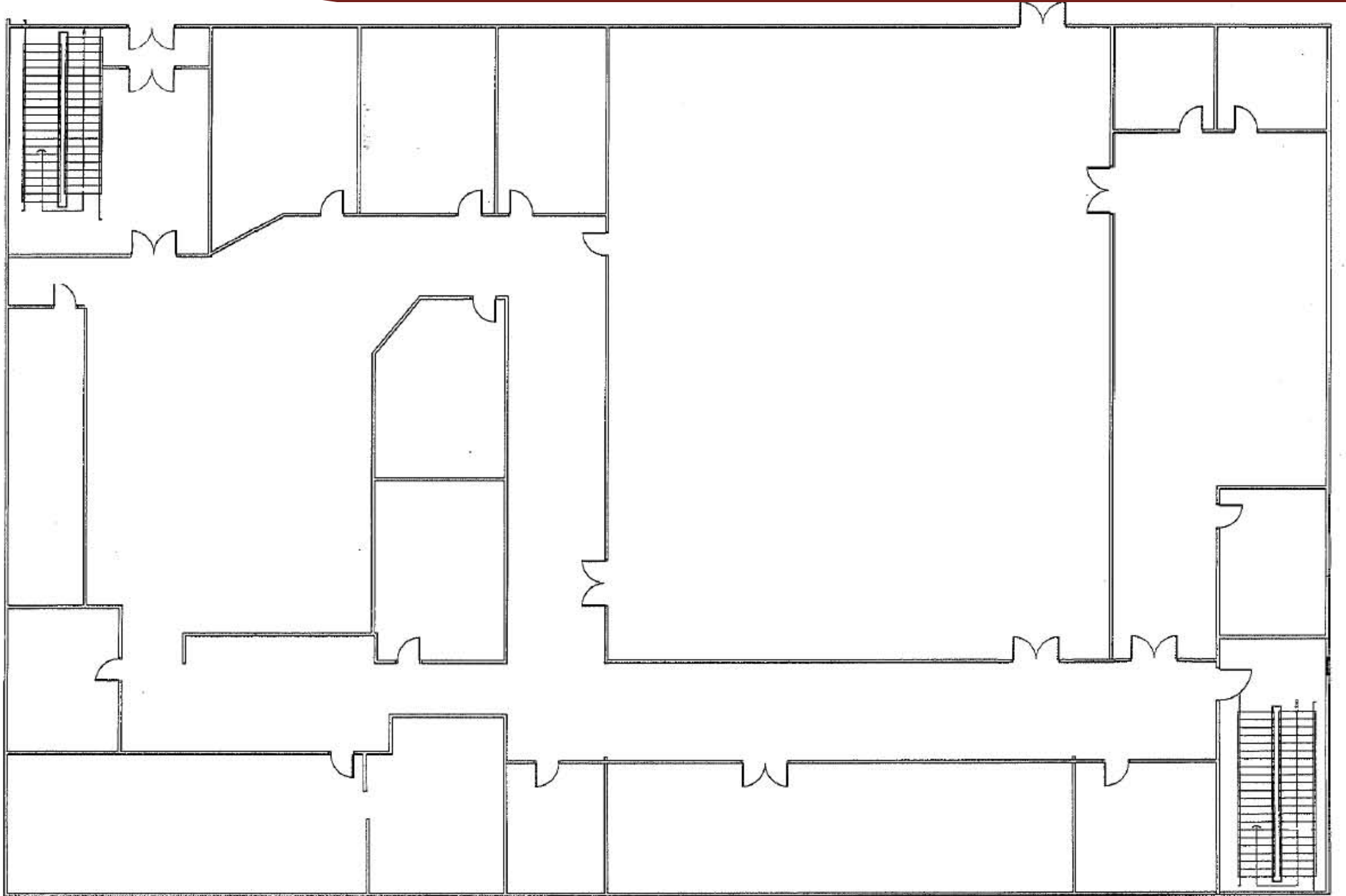


JOEL & GRANOT
COMMERCIAL REAL ESTATE

962 Howell Mill Road, Atlanta, GA 30318
(ph) 404.869.2600 | (fax) 404.869.2601

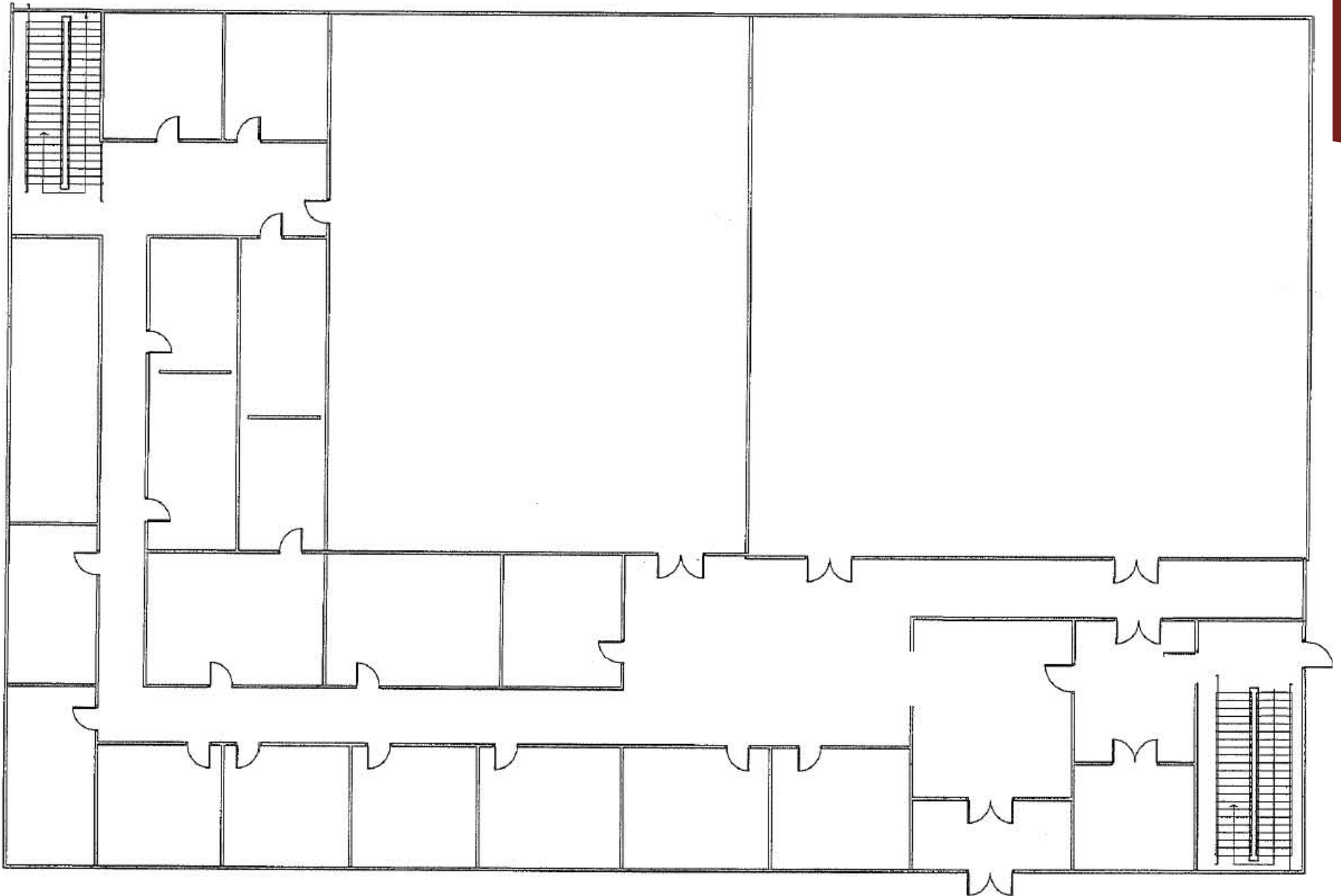
The information was obtained from sources we assume are reliable. We do not doubt its accuracy, however we do not guarantee it. No liability is assumed for errors and omissions. Information is subject to changes and withdrawal without notice.

1400 West Peachtree Street
1st Floor - 9,920 SF



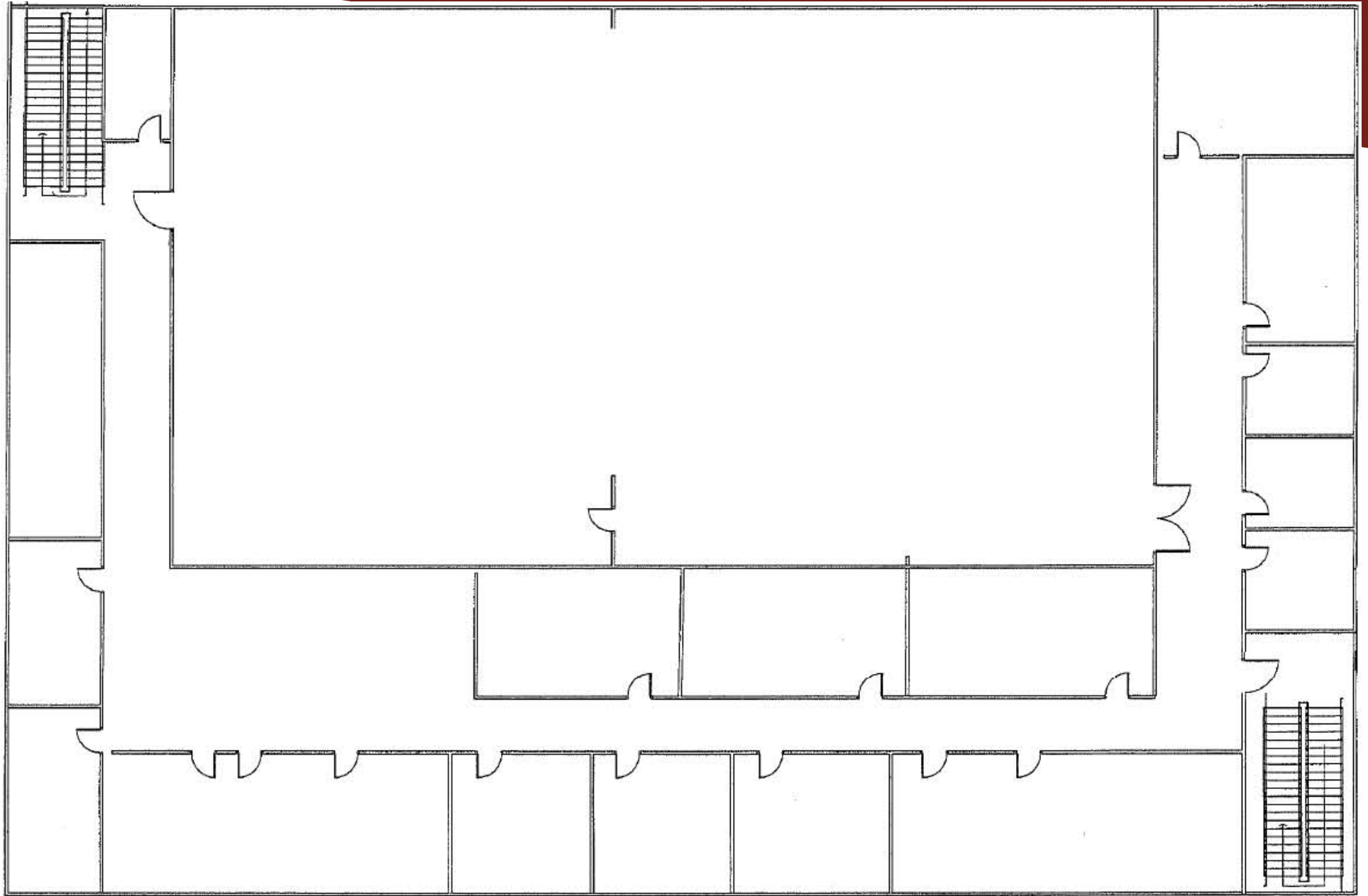
West Peachtree Street

1400 West Peachtree Street
2nd Floor - 9,920 SF



West Peachtree Street

1400 West Peachtree Street
3rd Floor - 9,920 SF



West Peachtree Street