

# AVAILABLE FOR LEASE - CHESHIRE WORKS

## Midtown/Buckhead Warehouse/Flex/Showroom



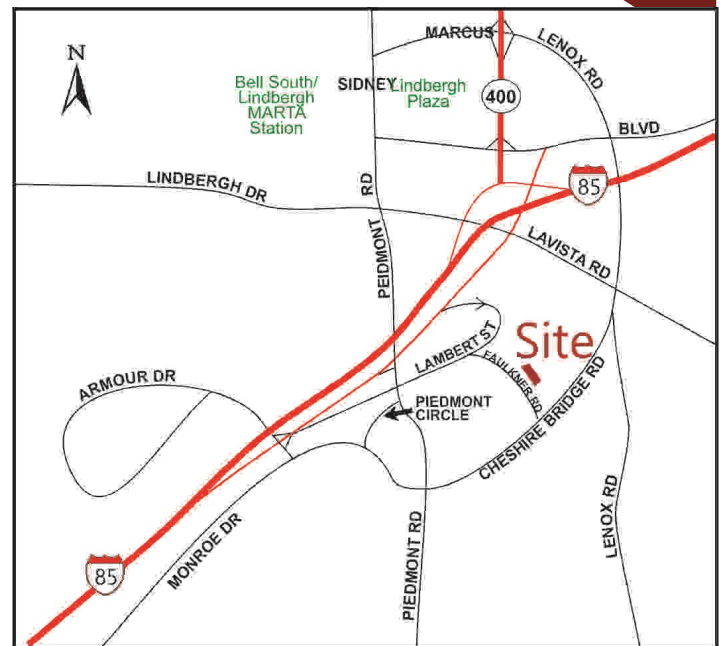
### Cheshire Works

2091-2115 & 2201-2241 Faulkner Road, Atlanta GA 30324

**SIZES:** Various Square Footages Ranging  
from 2,800 SF to 12,900 SF

**RATE:** \$12.00-\$14.00/SF NNN

- 16' Clear Ceiling Height
- Dock-High Truck Doors
- New Ownership Ready to Make Deals
- Warehouse, Flex, Office Opportunities Available
- Incredible Intown Location Adjacent to a New Planned 200 Unit Class "A" Apartment Complex
- Cheshire Bridge Road & Faulkner Road Location with Great Access to all Areas of Atlanta



Dave Smith

404.869.2605

dave@joelandgranot.com

For complete details, please visit: [www.joelandgranot.com](http://www.joelandgranot.com)



JOEL & GRANOT

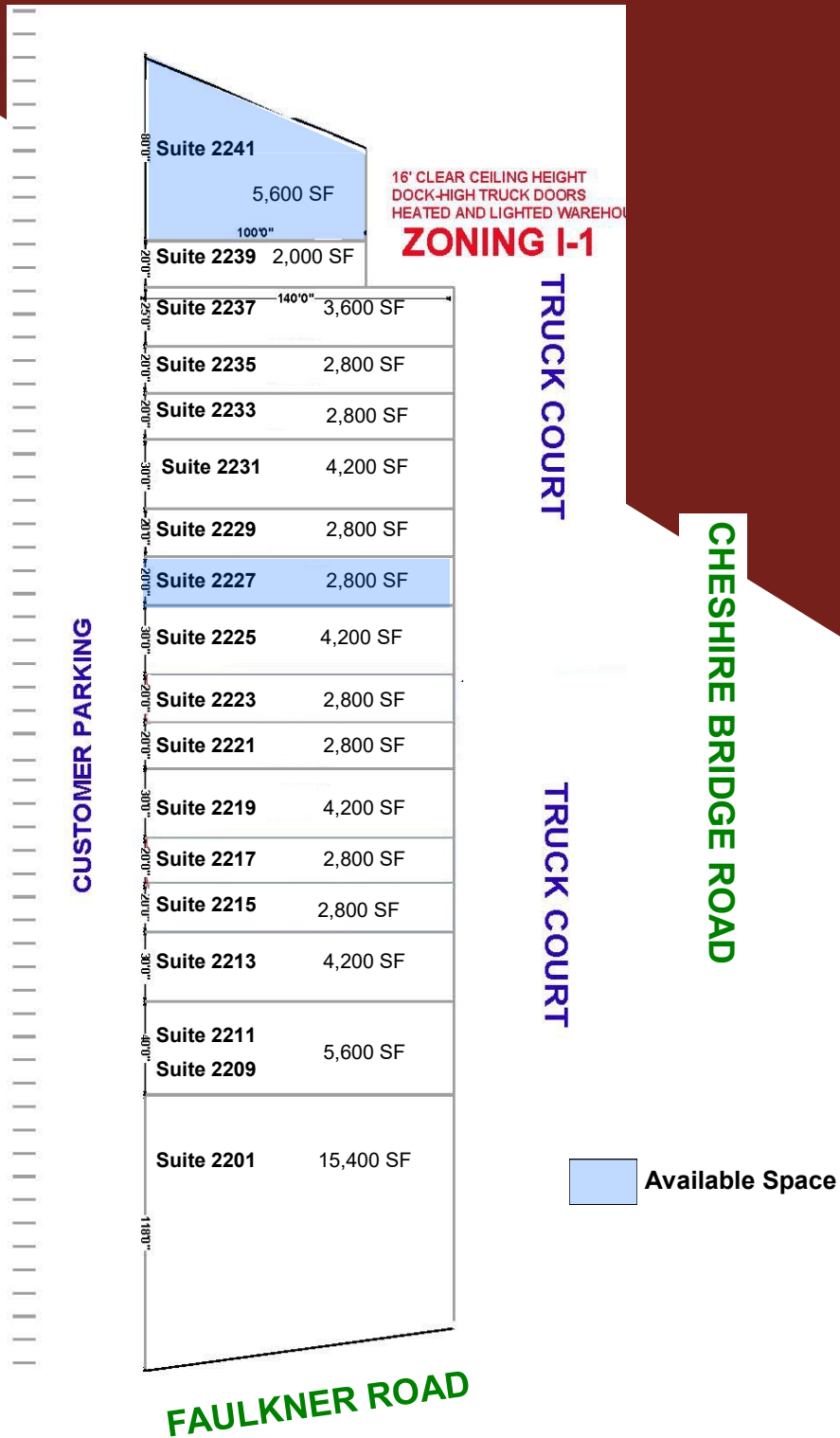
COMMERCIAL REAL ESTATE

962 Howell Mill Road, Atlanta, GA 30318  
(ph) 404.869.2600 | (fax) 404.869.2601

The information was obtained from sources we assume are reliable. We do not doubt its accuracy, however we do not guarantee it. No liability is assumed for errors and omissions. Information is subject to changes and withdrawal without notice.



2201-2241 Faulkner Road, Atlanta GA 30324  
 Site Plan  
 2,800 to 5,600 SF Available



**JOEL & GRANOT**  
 COMMERCIAL REAL ESTATE

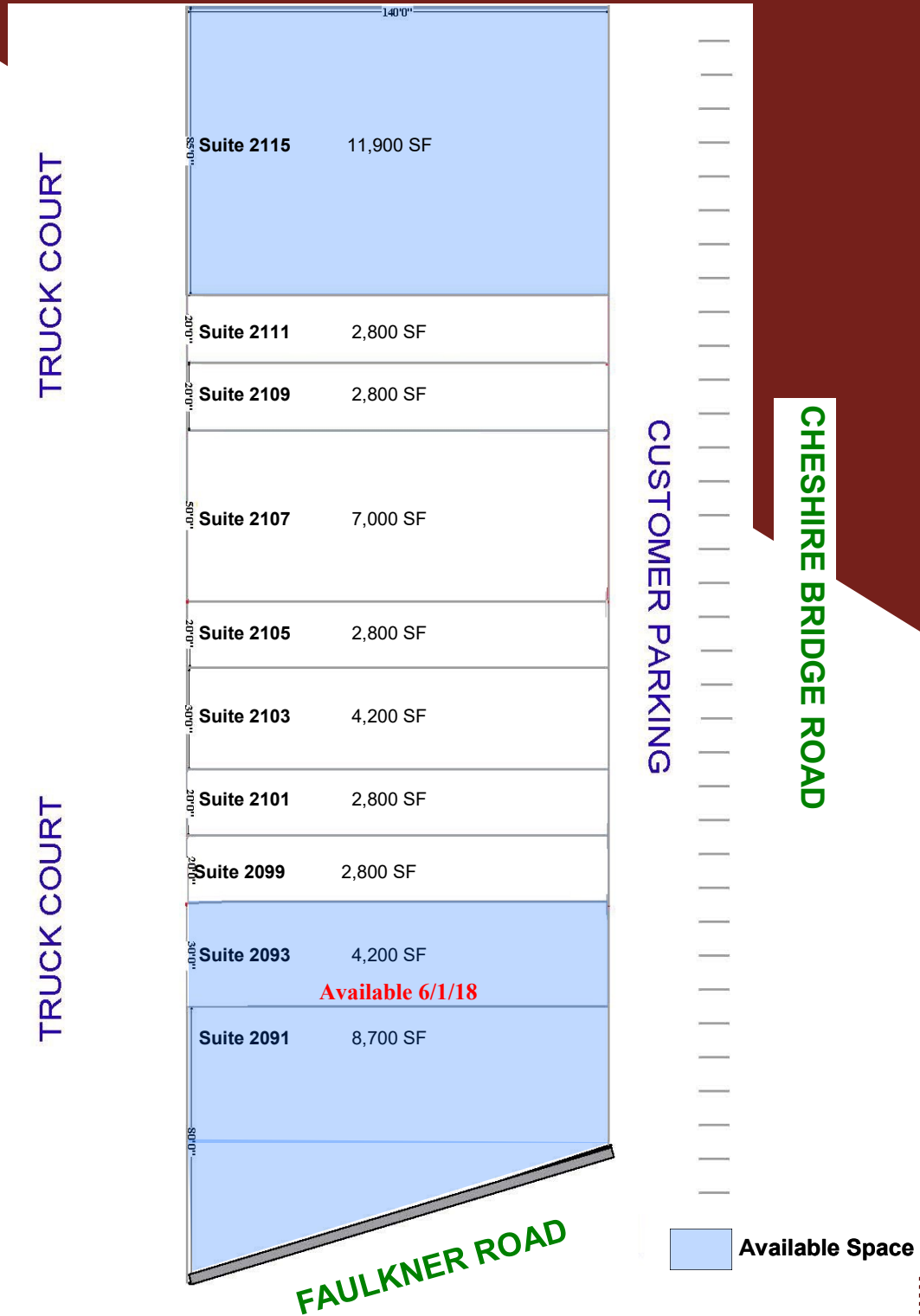
962 Howell Mill Road, Atlanta, GA 30318  
 (ph) 404.869.2600 | (fax) 404.869.2601

The information was obtained from sources we assume are reliable. We do not doubt its accuracy, however we do not guarantee it. No liability is assumed for errors and omissions. Information is subject to changes and withdrawal without notice.



2091-2115 Faulkner Road, Atlanta GA 30324

4,200 to 12,900 SF Available



JOEL & GRANOT  
COMMERCIAL REAL ESTATE

962 Howell Mill Road, Atlanta, GA 30318  
(ph) 404.869.2600 | (fax) 404.869.2601

The information was obtained from sources we assume are reliable. We do not doubt its accuracy, however we do not guarantee it. No liability is assumed for errors and omissions. Information is subject to changes and withdrawal without notice.

