

BUCKHEAD MEDICAL SPACE 2285 PEACHTREE ROAD

FOR LEASE: 4,523 Second Generation Dental Space

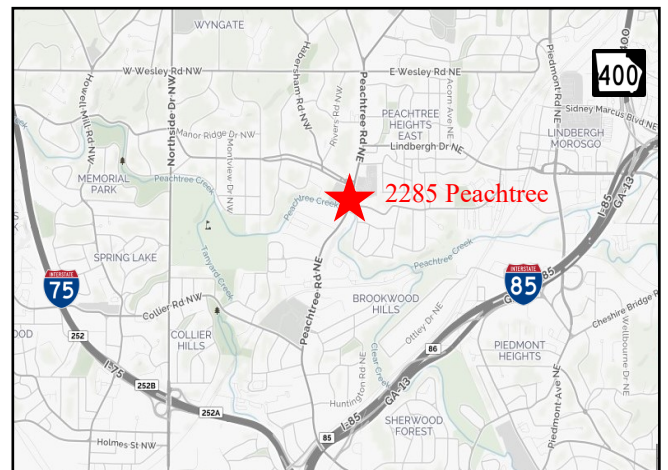


**2285 Peachtree Road
Atlanta, GA 30309**

Lease Rate: \$30.00/SF Net of Janitorial

Size: 4,523 RSF (can be expanded)

- Free parking
- Double door entrance off of elevator parking
- Move in condition for dental or medical practice
- Excellent visibility on Peachtree Rd. in the heart of Buckhead
- Monument signage available
- Recently completed \$1.5M renovation to the property
- Traffic count: 39,236 VPD on Peachtree Rd.



Bill Ward
404.869.2655
bill@joelandgranot.com



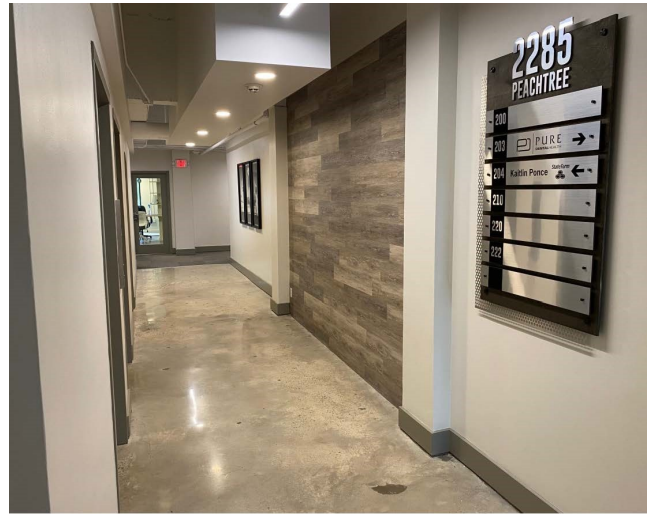
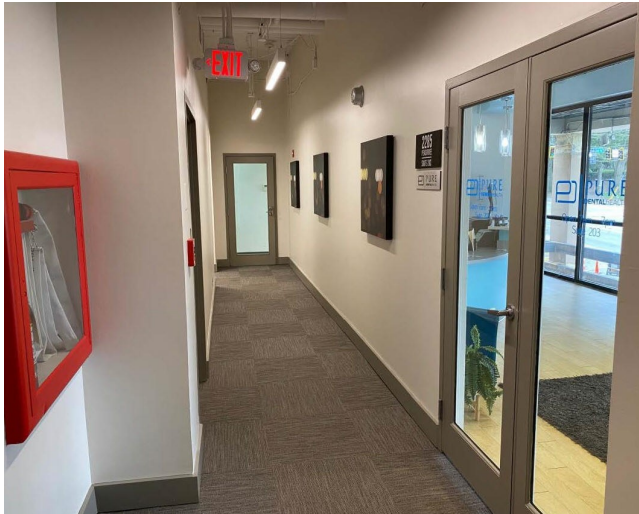
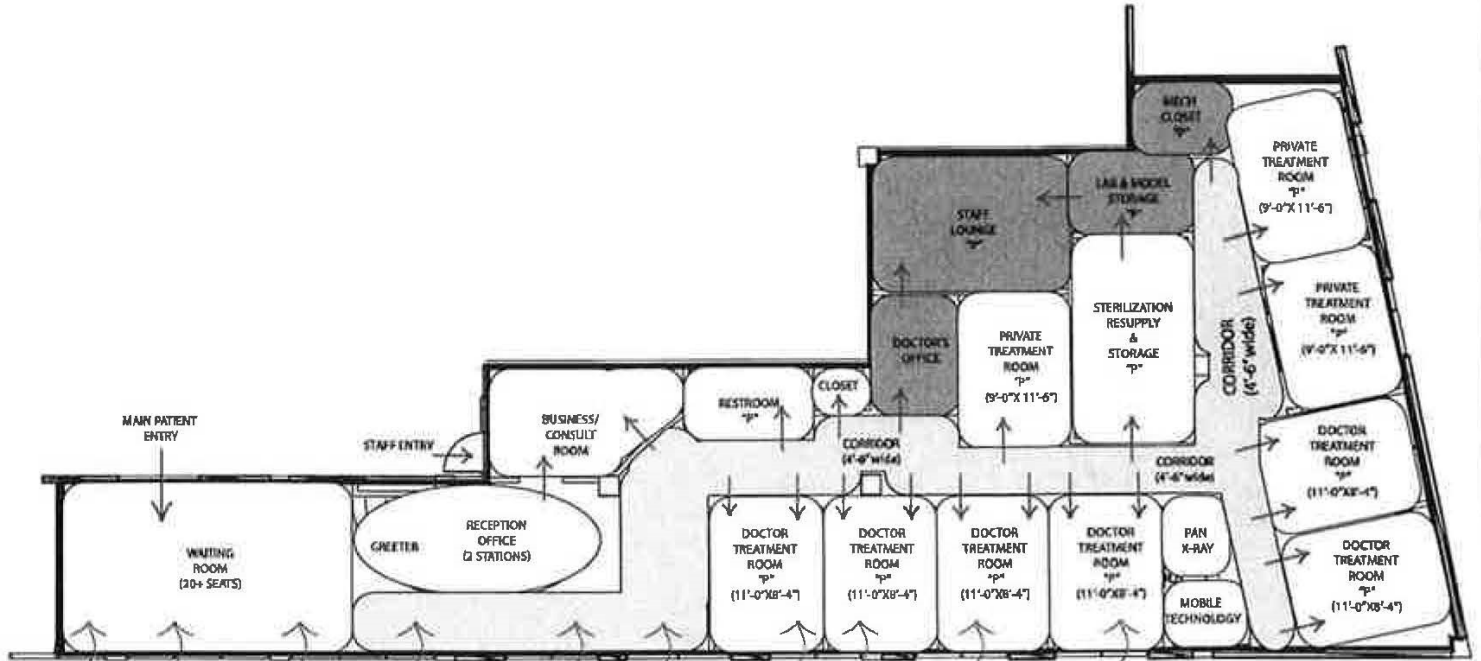
633 Antone St. NW, Atlanta, GA 30318
(ph) 404.869.2600 | www.joelandgranot.com

The information was obtained from sources we assume are reliable. We do not doubt its accuracy, however we do not guarantee it. No liability is assumed for errors and omissions. Information is subject to changes and withdrawal without notice.

2285 PEACHTREE

Suite 203

4,523 RSF



Bill Ward
 404.869.2655
 bill@joelandgranot.com



633 Antone St NW, Atlanta, GA 30318
 (ph) 404.869.2600 | www.joelandgranot.com

The information was obtained from sources we assume are reliable. We do not doubt its accuracy, however we do not guarantee it. No liability is assumed for errors and omissions. Information is subject to changes and withdrawal without notice.