

FOR LEASE: Peachtree Rd. in Buckhead

FIRST FLOOR RESTAURANT / RETAIL & SECOND FLOOR MEDICAL / OFFICE SPACE



2285 Peachtree Road, Atlanta, GA 30309

(Just south of Peachtree Battle Shopping Center)

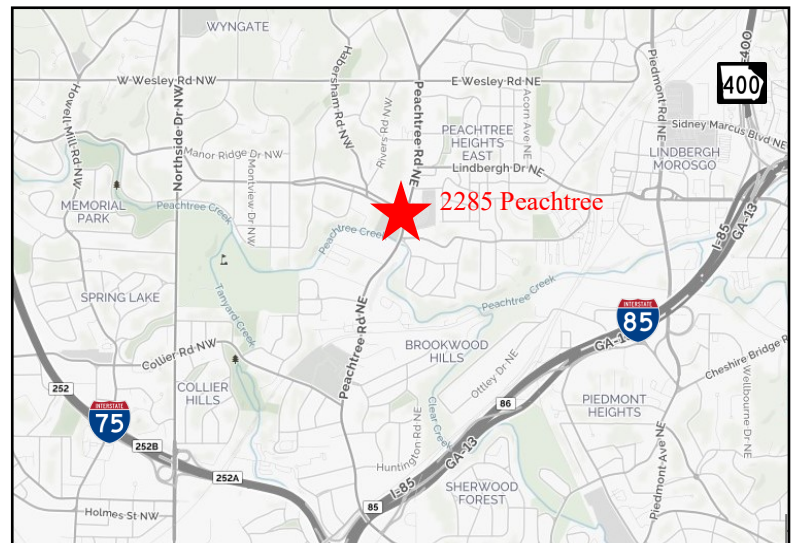
SIZE: 4,000 - 7,325 SF RETAIL / RESTAURANT & 6,676 SF OFFICE
(BOTH CAN BE SUBDIVDED)

LEASE RATE: Inquire

- 4,000 SF recently built out restaurant space
- Great location in Buckhead with many restaurants and amenities in walking distance
- Over 100 **FREE** covered and uncovered parking spaces
- Signage on Peachtree Rd
- Traffic Count: 54,593 VPD (Peachtree Road and Peachtree Battle Intersection)

[Restaurant
360 Virtual Tour](#)

[Restaurant
Video Tour](#)



Demographics		
0.5 Miles	1 Mile	2 Miles
2019 Total Population		
5,881	17,143	70,447
2019 Average Income		
\$136,877	\$143,091	\$128,623
2019 Area Employees		
8,267	19,032	76,267

Bill Ward

404.869.2655

bill@joelandgranot.com

For complete details, please visit: www.joelandgranot.com

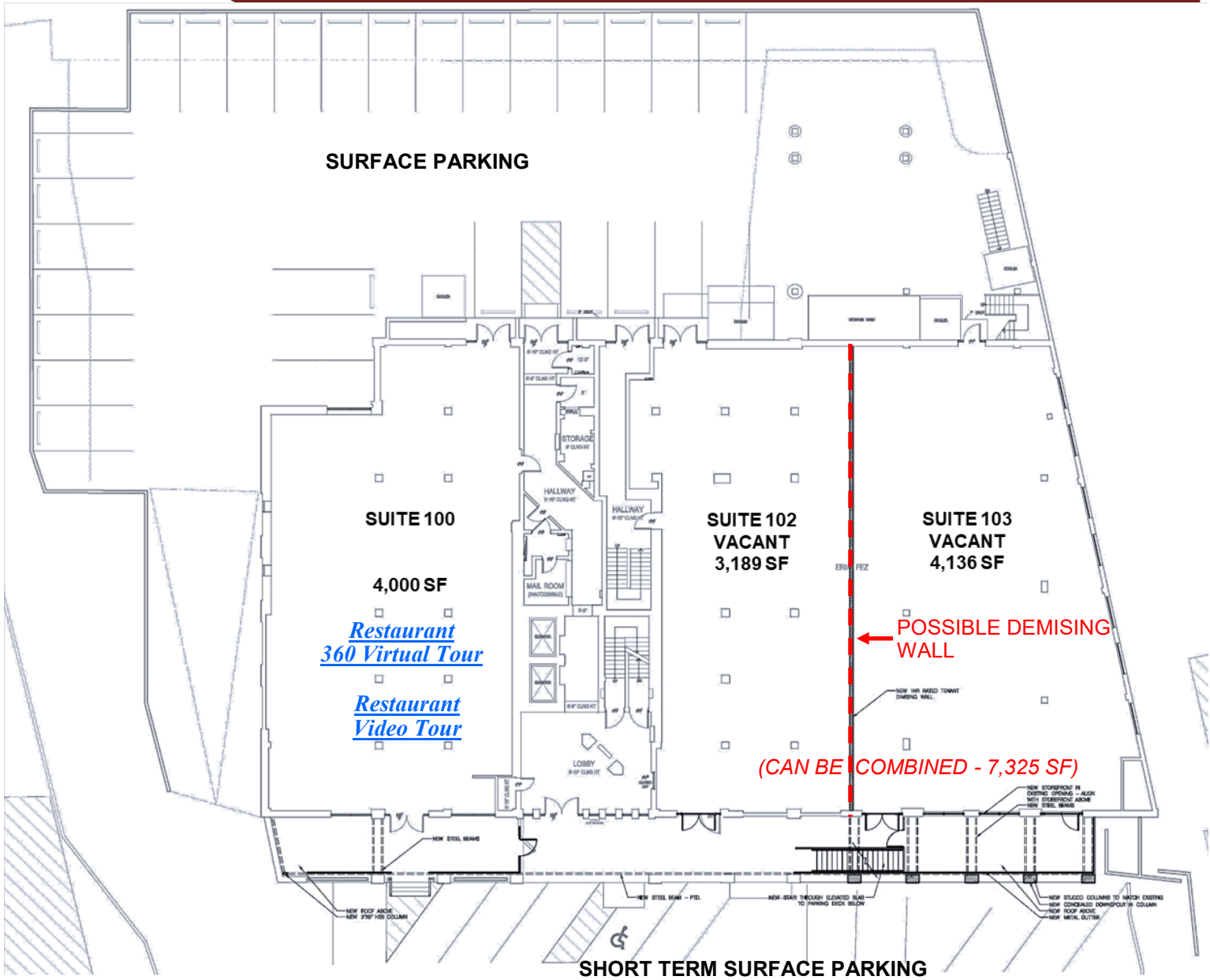


JOEL & GRANOT
COMMERCIAL REAL ESTATE

633 Antone St NW, Atlanta, GA 30318
(ph) 404.869.2600 | (fax) 404.869.2601

The information was obtained from sources we assume are reliable. We do not doubt its accuracy, however we do not guarantee it. No liability is assumed for errors and omissions. Information is subject to changes and withdrawal without notice.

2285 PEACHTREE ROAD, ATLANTA, GA 30309 RETAIL LEVEL



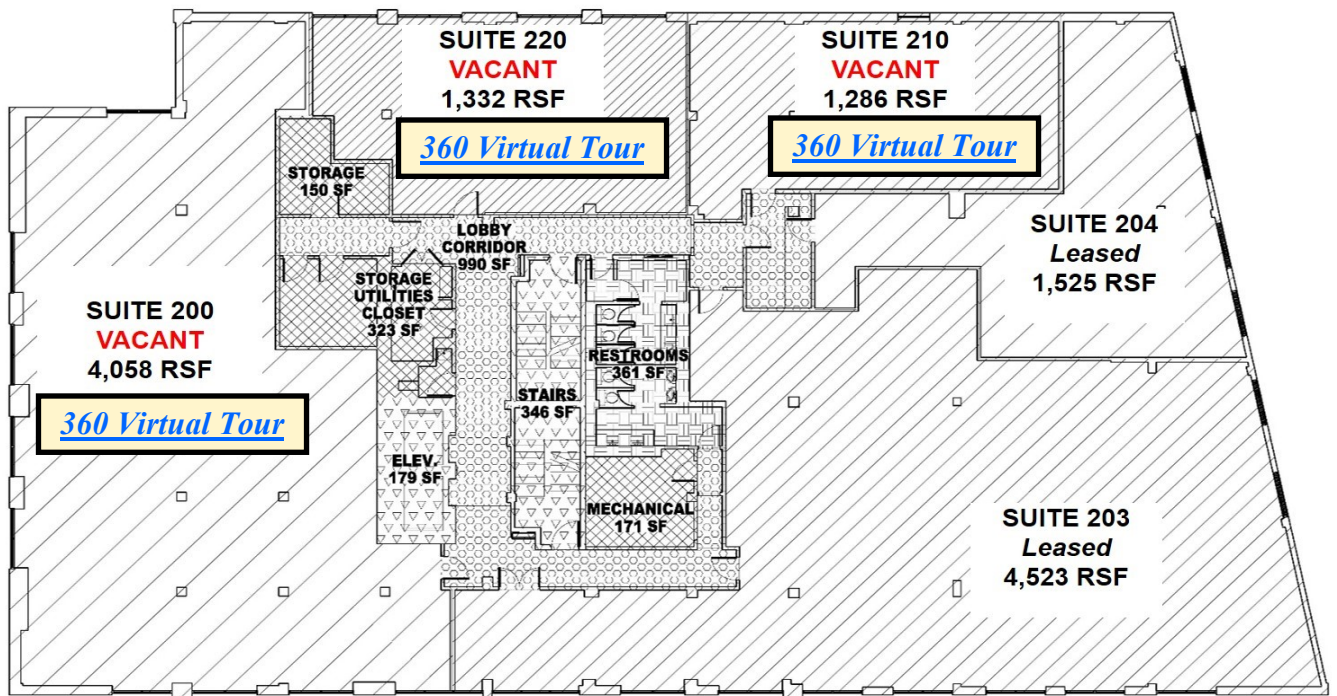
Bill Ward
404.869.2655
bill@joelandgranot.com



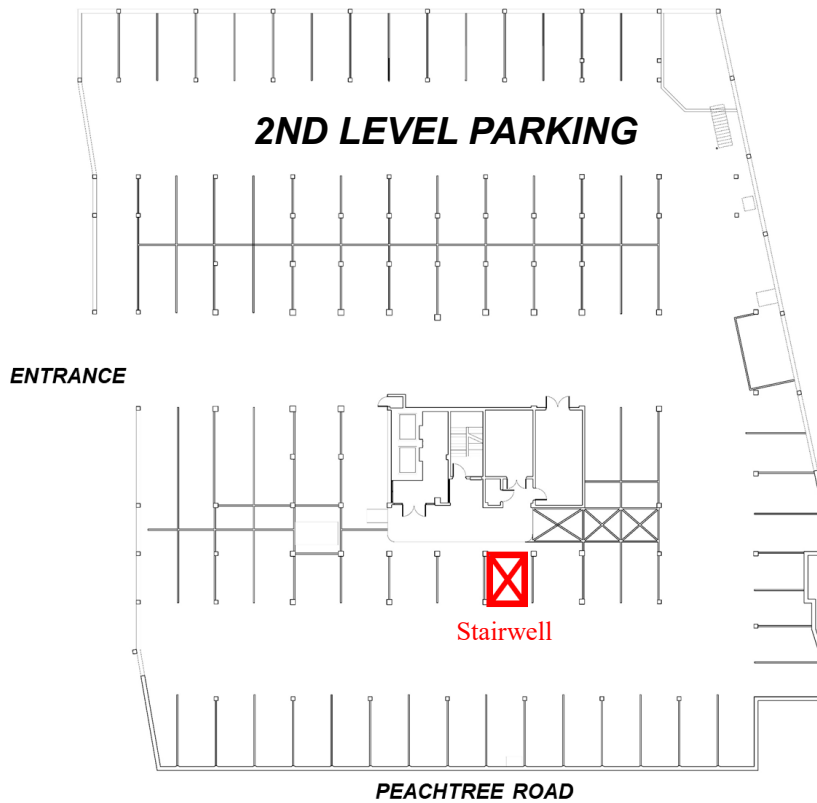
633 Antone St NW, Atlanta, GA 30318
(ph) 404.869.2600 | (fax) 404.869.2601

The information was obtained from sources we assume are reliable. We do not doubt its accuracy, however we do not guarantee it. No liability is assumed for errors and omissions. Information is subject to changes and withdrawal without notice.

2285 PEACHTREE ROAD, ATLANTA, GA 30309 OFFICE & PARKING GARAGE LEVELS



PEACHTREE RD.



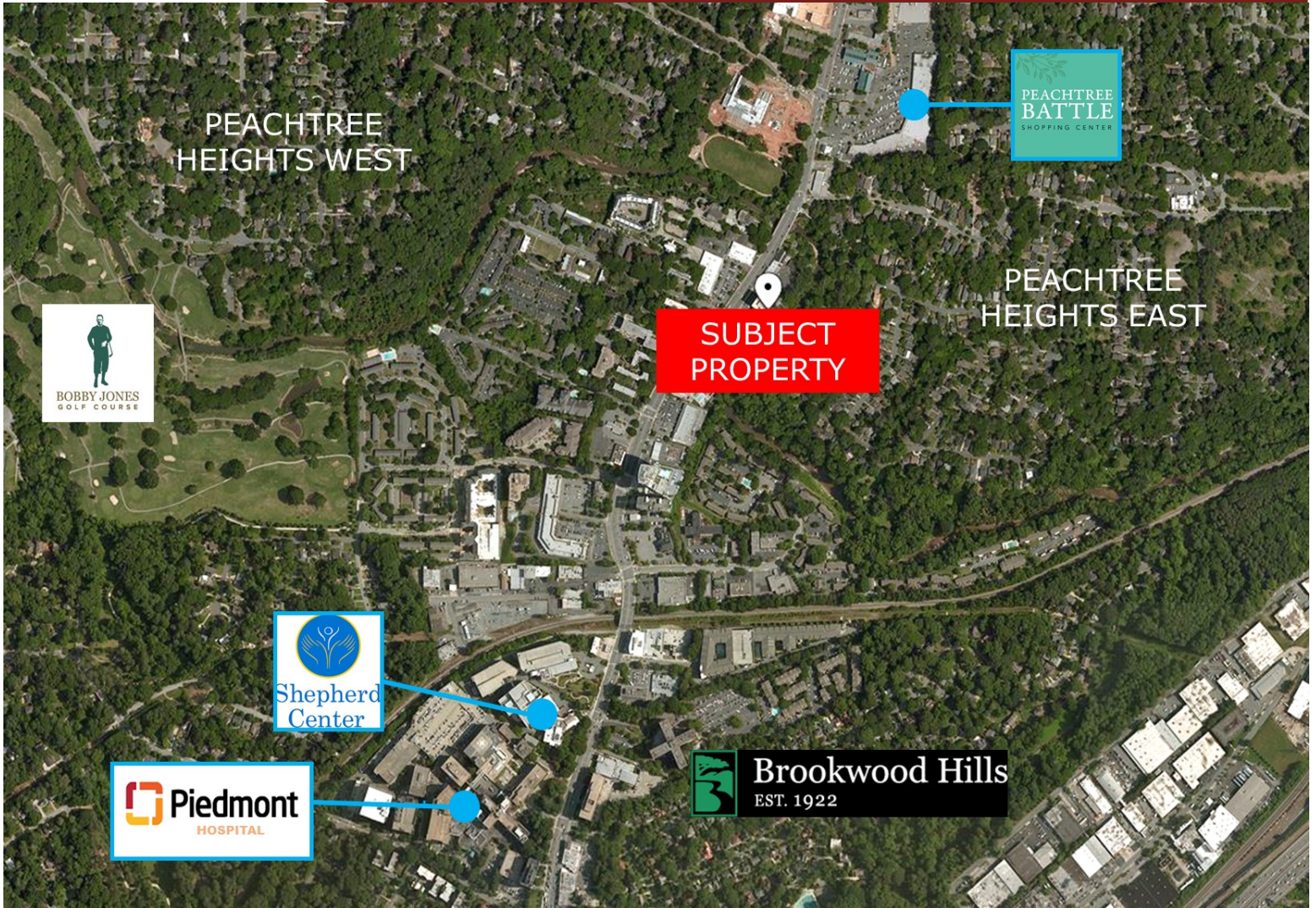
Bill Ward
404.869.2655
bill@joelandgranot.com



633 Antone St NW, Atlanta, GA 30318
(ph) 404.869.2600 | (fax) 404.869.2601

The information was obtained from sources we assume are reliable. We do not doubt its accuracy, however we do not guarantee it. No liability is assumed for errors and omissions. Information is subject to changes and withdrawal without notice.

2285 PEACHTREE ROAD, ATLANTA, GA 30309
AERIAL



Bill Ward
404.869.2655
bill@joelandgranot.com



633 Antone St NW, Atlanta, GA 30318
(ph) 404.869.2600 | (fax) 404.869.2601

The information was obtained from sources we assume are reliable. We do not doubt its accuracy, however we do not guarantee it. No liability is assumed for errors and omissions. Information is subject to changes and withdrawal without notice.