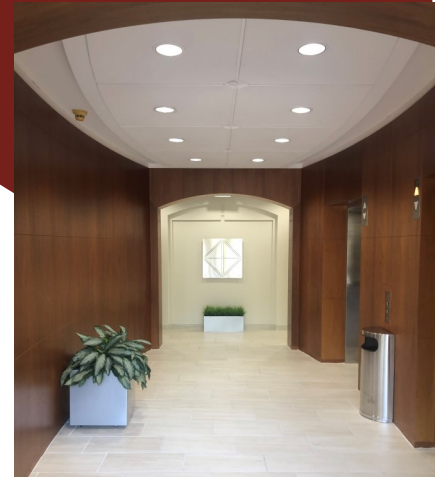


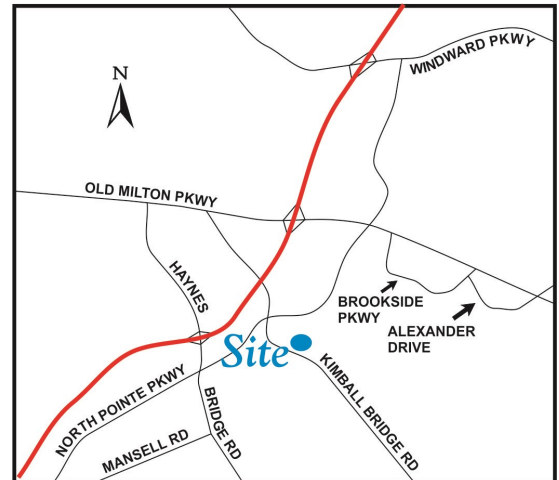
# FOR LEASE: 2,075 - 3,038 CONTIGUOUS RSF MEDICAL / OFFICE SPACE ALPHARETTA SUBMARKET



**Royal 400**  
**3005 Royal Boulevard South**  
**Alpharetta, GA 30022**

**Size:** 2,075 - 3,038 RSF  
**Rate:** \$23.50/SF

- Office Building with Professional and Medical Tenants
- Covered Parking Garage for Tenants (1/1000) and Surface Parking for Visitors
- Excellent Access to GA 400, North Point Pkwy, Haynes Bridge Rd & Old Milton Pkwy
- Convenient to Hotels, Restaurants, Banks and North Point Mall
- Adjacent to the Alpharetta Greenway



**Renée Rosenheck**  
404.869.2635  
[renee@joelandgranot.com](mailto:renee@joelandgranot.com)

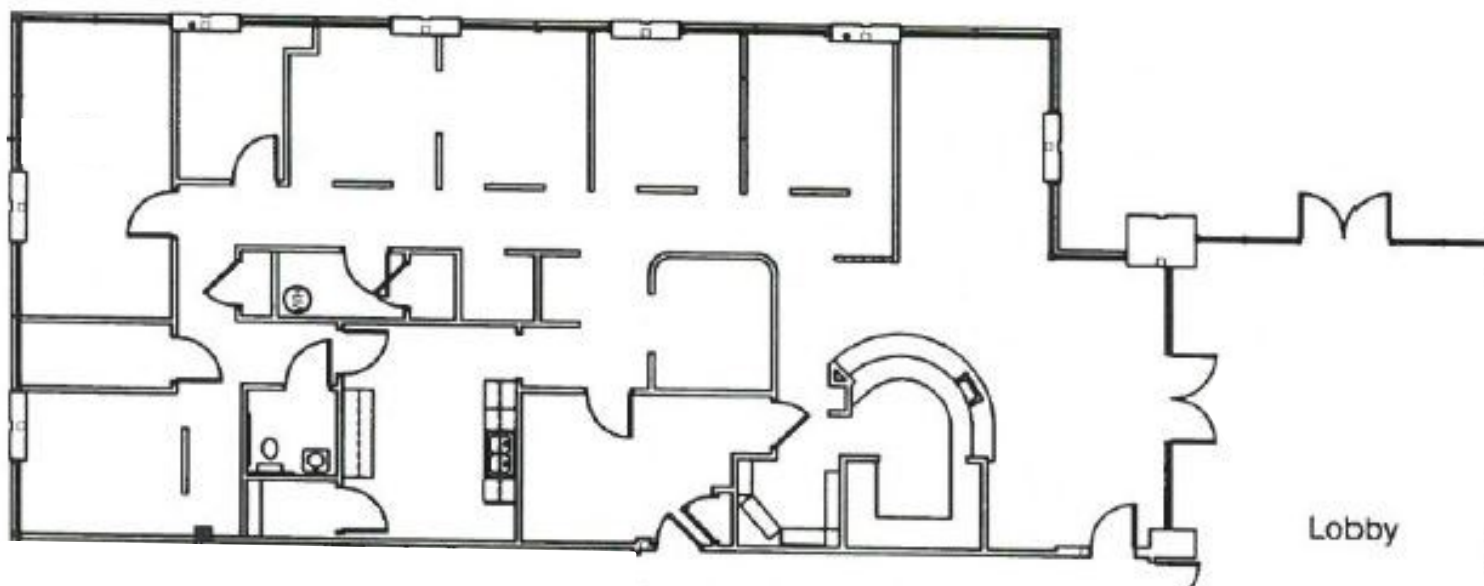
**Ted Schwartz**  
404.869.2606  
[ted@joelandgranot.com](mailto:ted@joelandgranot.com)



633 Antone St NW, Atlanta, GA 30318  
(ph) 404.869.2600 | (fax) 404.869.2601

The information was obtained from sources we assume are reliable. We do not doubt its accuracy, however we do not guarantee it. No liability is assumed for errors and omissions. Information is subject to changes and withdrawal without notice.

3005 Royal Blvd South  
Alpharetta, GA 30022  
First Floor—Suite 150  
3,038 SF



Renée Rosenheck  
404.869.2635  
[renee@joelandgranot.com](mailto:renee@joelandgranot.com)

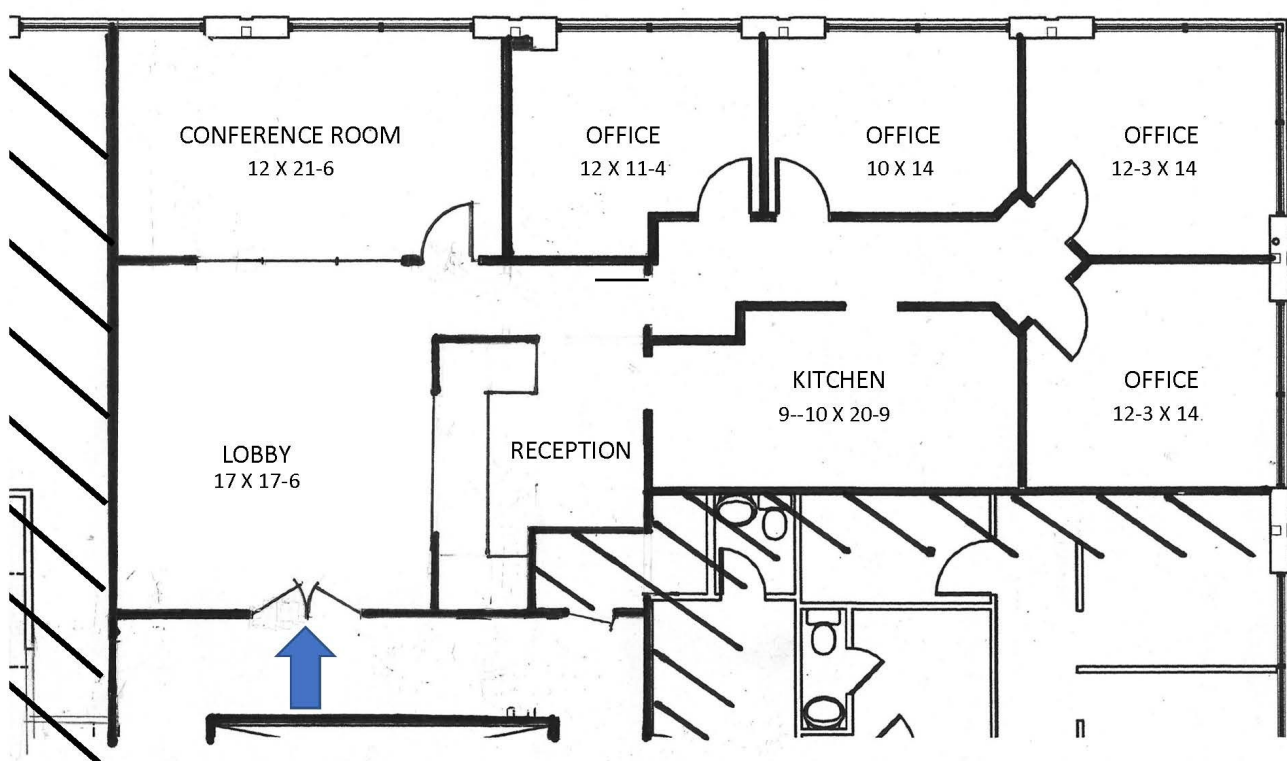
Ted Schwartz  
404.869.2606  
[ted@joelandgranot.com](mailto:ted@joelandgranot.com)



633 Antone St NW, Atlanta, GA 30318  
(ph) 404.869.2600 | (fax) 404.869.2601

The information was obtained from sources we assume are reliable. We do not doubt its accuracy, however we do not guarantee it. No liability is assumed for errors and omissions. Information is subject to changes and withdrawal without notice.

3005 Royal Blvd South  
Alpharetta, GA 30022  
Suite 240  
2,075 RSF



Renée Rosenheck  
404.869.2635  
[renee@joelandgranot.com](mailto:renee@joelandgranot.com)

Ted Schwartz  
404.869.2606  
[ted@joelandgranot.com](mailto:ted@joelandgranot.com)



633 Antone St NW, Atlanta, GA 30318  
(ph) 404.869.2600 | (fax) 404.869.2601

The information was obtained from sources we assume are reliable. We do not doubt its accuracy, however we do not guarantee it. No liability is assumed for errors and omissions. Information is subject to changes and withdrawal without notice.