

FOR LEASE

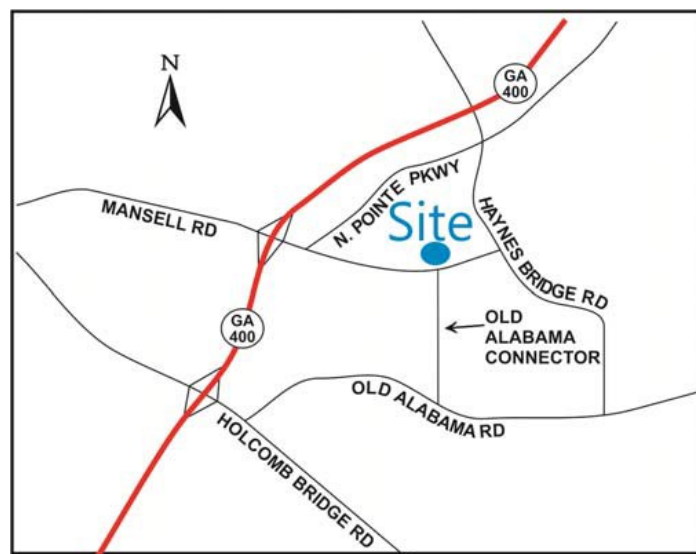
Alpharetta Office Space with Signage Available



3800 Mansell Road
Alpharetta, GA 30022

Size: 3,157 RSF

- First Floor Class “B” Office Space with Private Offices / Open Partition Plan
- Signage Available
- Ideal for Professional Services and Technology Firms
- Close Proximity to GA 400 & Northpoint Mall
- Property Located on the Alpharetta Greenway



Renée Rosenheck

404.869.2635

renee@joelandgranot.com

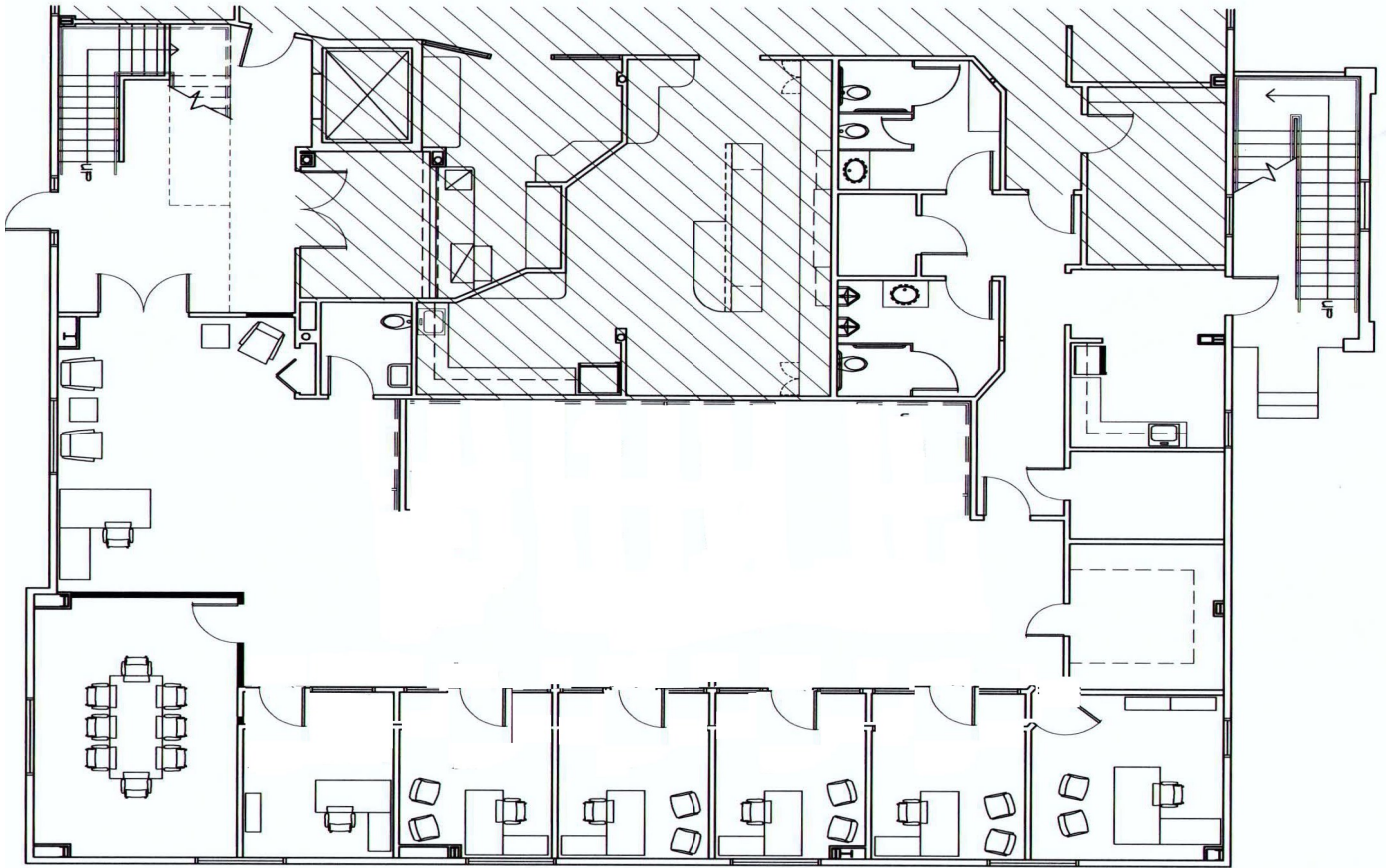
For complete details, please visit: www.joelandgranot.com

633 Antone St NW, Atlanta, GA 30318
(ph) 404.869.2600 | (fax) 404.869.2601



The information was obtained from sources we assume are reliable. We do not doubt its accuracy, however we do not guarantee it. No liability is assumed for errors and omissions. Information is subject to changes and withdrawal without notice.

3800 Mansell Rd. Floor Plan



Renée Rosenheck
404.869.2635
renee@joelandgranot.com



633 Antone St NW, Atlanta, GA 30318
(ph) 404.869.2600 | (fax) 404.869.2601

The information was obtained from sources we assume are reliable. We do not doubt its accuracy, however we do not guarantee it. No liability is assumed for errors and omissions. Information is subject to changes and withdrawal without notice.