

# AVAILABLE FOR LEASE

## Retail/Office Space in Alpharetta



**3960 Old Milton Parkway  
Alpharetta, GA 30005**

**Size: 1,377 RSF**  
**Rate: \$18.00 SF MG\***

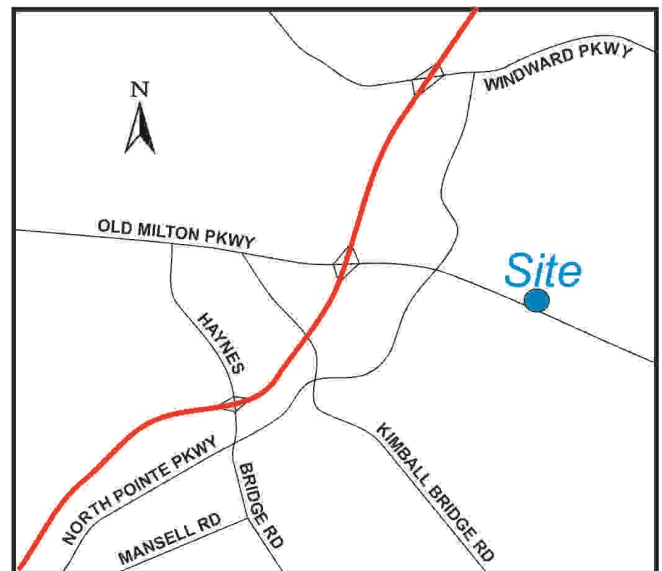
**\*\$9.50/SF for the first 6 months with a minimum 5 year lease term**

- Ideal for a Professional Services Firm
- Retail / Office Use
- Excellent Signage on Old Milton Pkwy.
- Flexible Lease Terms
- Brokers Protected

**Ted Schwartz**  
404.869.2606  
ted@joelandgranot.com

**Renée Rosenheck**  
404.869.2635  
renee@joelandgranot.com

For complete details, please visit: [www.joelandgranot.com](http://www.joelandgranot.com)

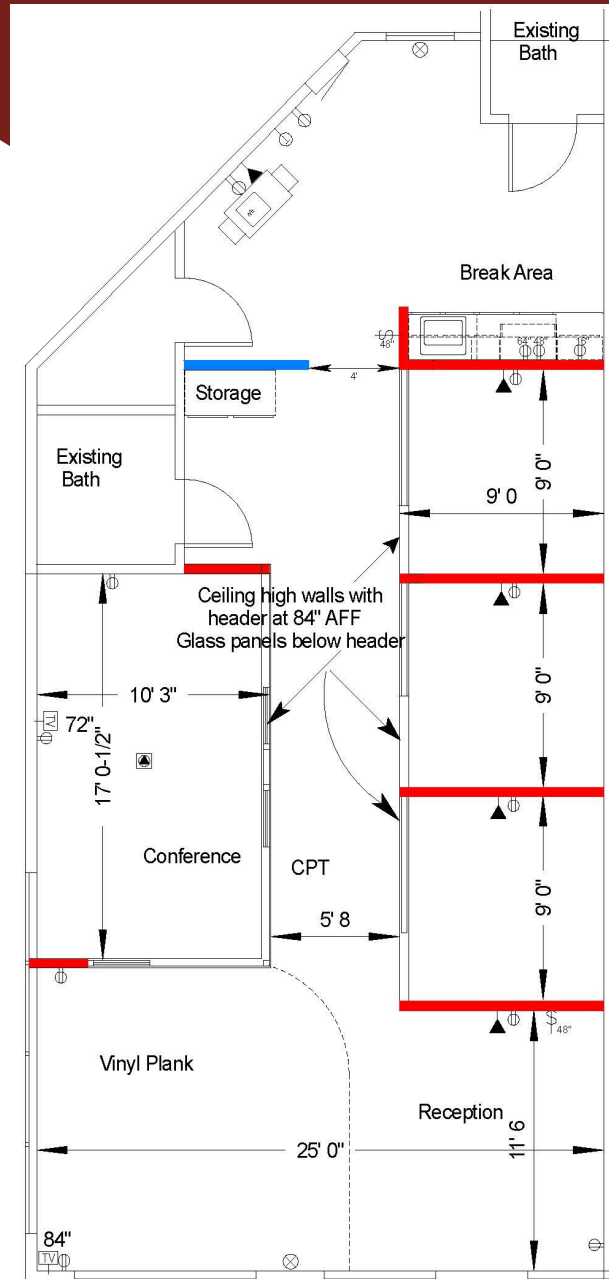


**JOEL & GRANOT**  
COMMERCIAL REAL ESTATE

633 Antone St NW, Atlanta, GA 30318  
(ph) 404.869.2600 |

The information was obtained from sources we assume are reliable. We do not doubt its accuracy, however we do not guarantee it. No liability is assumed for errors and omissions. Information is subject to changes and withdrawal without notice.

# 3960 Old Milton Pkwy, Alpharetta, GA 30005 Floor Plan



Suite 100  
1,377 RSF

Ted Schwartz  
404.869.2606  
ted@joelandgranot.com

Renée Rosenheck  
404.869.2635  
renee@joelandgranot.com



633 Antone St NW, Atlanta, GA 30318  
(ph) 404.869.2600

The information was obtained from sources we assume are reliable. We do not doubt its accuracy, however we do not guarantee it. No liability is assumed for errors and omissions. Information is subject to changes and withdrawal without notice.