

# Sandy Springs / Central Perimeter Available For Sublease

3,520 SF Sublease Available in Century Springs Office Park



**Century Springs West**  
**6000 Lake Forrest Drive, Suite 435**  
**Sandy Springs, GA 30328**

**Size:** 3,520 RSF

**Rate:** \$18.50 SF Full Service\*

**\*\$15.00 /SF For the Remainder of 2019**

**Term:** Through June 30, 2023

- Furniture Available
- Highly Partitioned Space
- Ideal for Professional Services Firm
- Below Market Rate

**Ted Schwartz**

404.869.2606

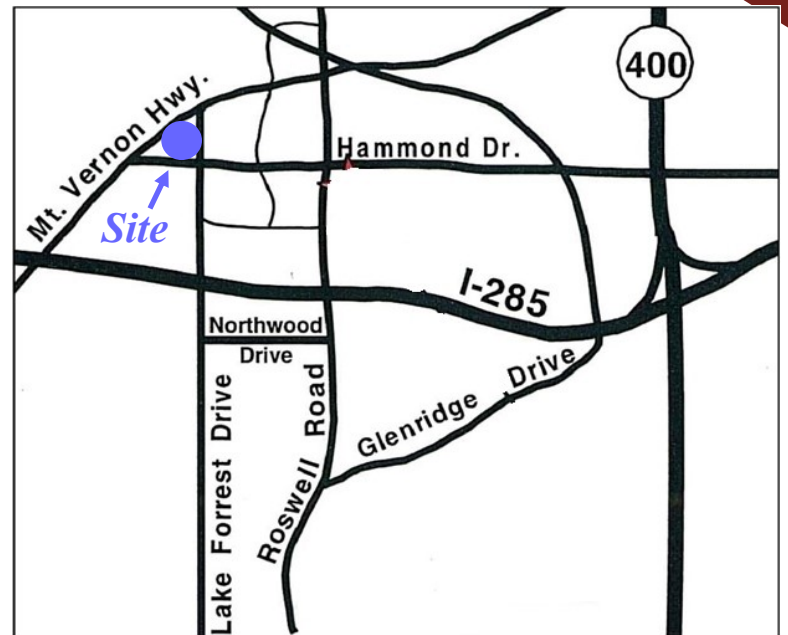
ted@joelandgranot.com

**Renée Rosenheck**

404.869.2635

renee@joelandgranot.com

For complete details, please visit: [www.joelandgranot.com](http://www.joelandgranot.com)

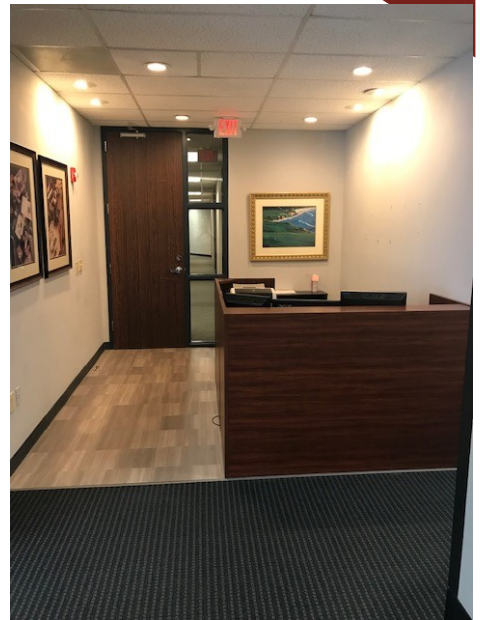
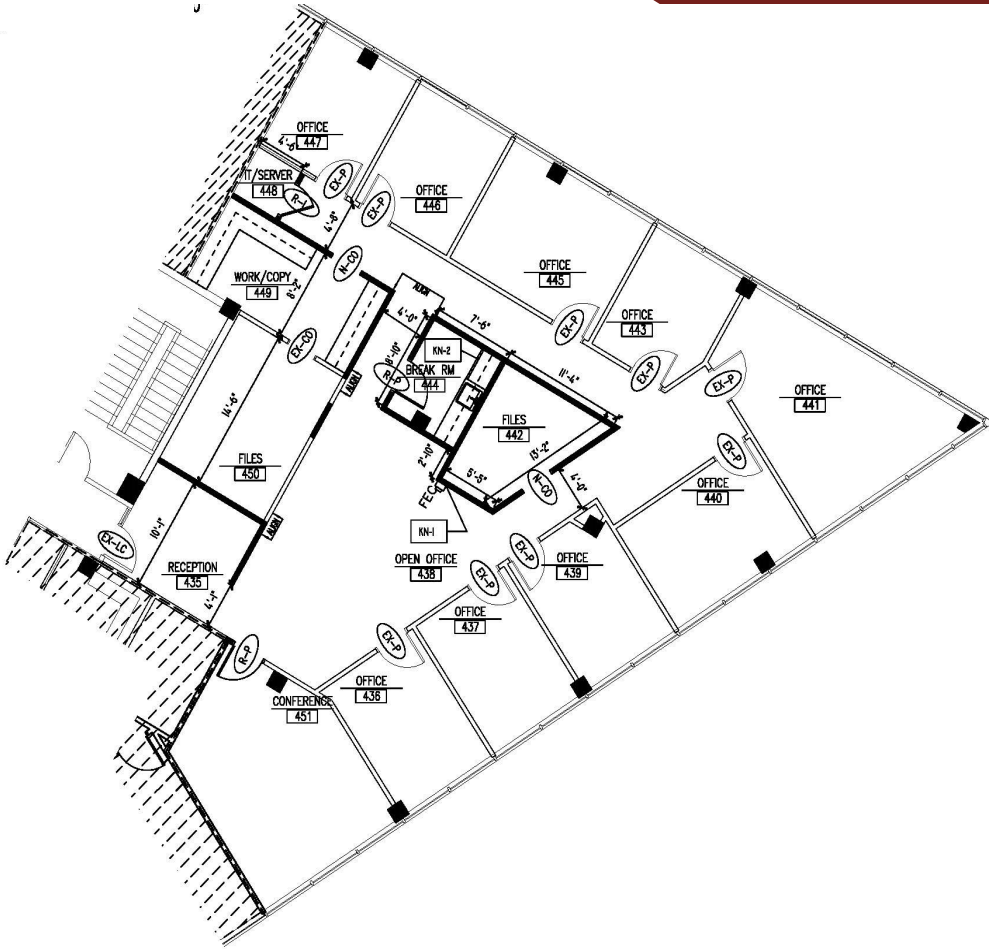


**JOEL & GRANOT**  
COMMERCIAL REAL ESTATE

633 Antone St NW, Atlanta, GA 30318  
(ph) 404.869.2600 | (fax) 404.869.2601

The information was obtained from sources we assume are reliable. We do not doubt its accuracy, however we do not guarantee it. No liability is assumed for errors and omissions. Information is subject to changes and withdrawal without notice.

# 6000 Century Springs East Sandy Springs, GA 30328 Floor Plan - 3,520 RSF



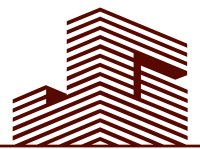
Ted Schwartz  
404.869.2606  
ted@joelandgranot.com

Renée Rosenheck  
404.869.2635  
renee@joelandgranot.com

For complete details, please visit: [www.joelandgranot.com](http://www.joelandgranot.com)

962 Howell Mill Road, Atlanta, GA 30318  
(ph) 404.869.2600 | (fax) 404.869.2601

The information was obtained from sources we assume are reliable. We do not doubt its accuracy, however we do not guarantee it. No liability is assumed for errors and omissions. Information is subject to changes and withdrawal without notice.



JOEL & GRANOT  
COMMERCIAL REAL ESTATE