

# Available for Sublease

## North Fulton Office Space in Deerfield Point, Building 200



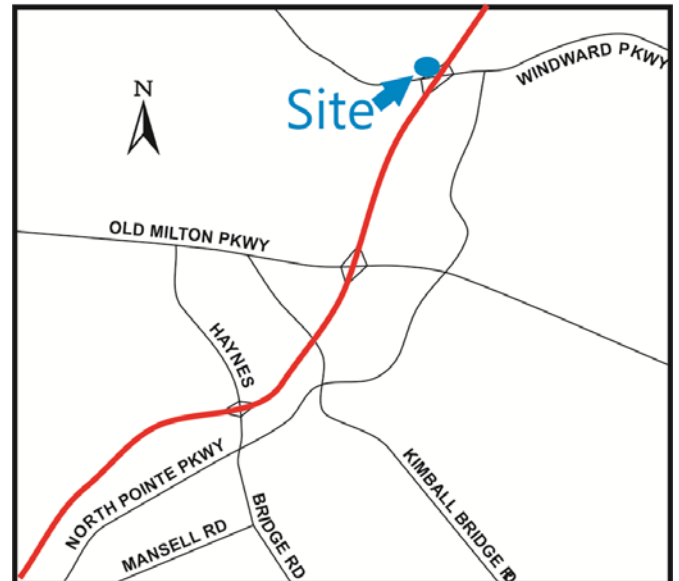
### 12735 Morris Road Extension, Alpharetta, GA 30004

**Rate:** *\$18.50SF*

**Size:** *1,499 SF*

**Term:** *Through January 31, 2017*

- Class "A" Office Space With 1st Floor Elevator Lobby Exposure
- Immediate Occupancy
- Furniture Potentially Available
- Ideal for Professional/Financial Planning Firms
- Windward Parkway, Easy Access to GA 400
- Brokers Protected

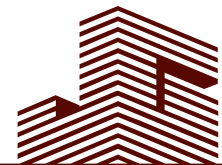


**Ted Schwartz**

404.869.2606

ted@joelandgranot.com

For complete details, please visit: [www.joelandgranot.com](http://www.joelandgranot.com)



**JOEL & GRANOT**

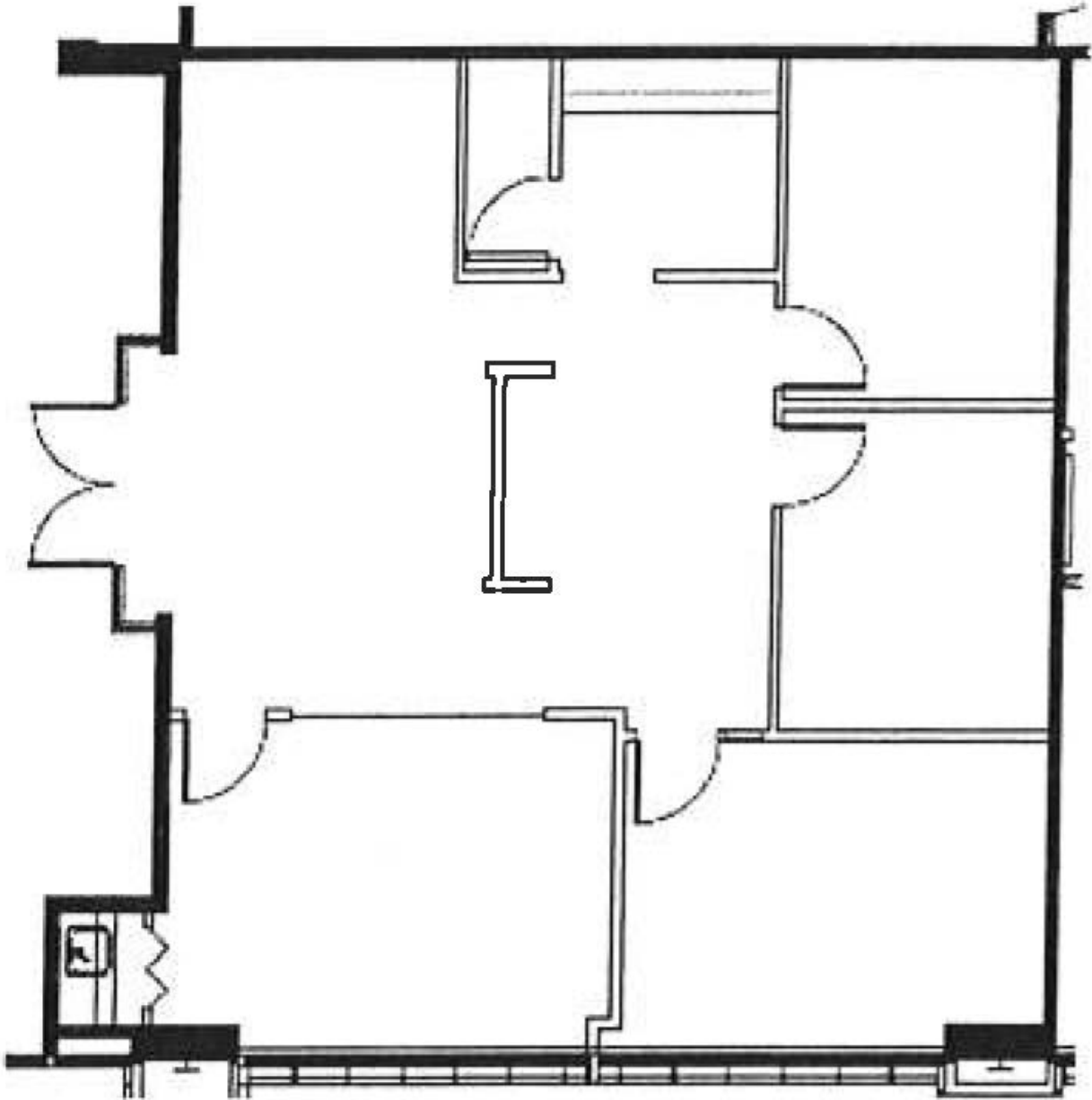
COMMERCIAL REAL ESTATE

962 Howell Mill Road, Atlanta, GA 30318  
(ph) 404.869.2600 | (fax) 404.869.2601

The information was obtained from sources we assume are reliable. We do not doubt its accuracy, however we do not guarantee it. No liability is assumed for errors and omissions. Information is subject to changes and withdrawal without notice.

# Deerfield Point, Building 200

## Floor Plan



962 Howell Mill Road, Atlanta, GA 30318  
(ph) 404.869.2600 | (fax) 404.869.2601

The information was obtained from sources we assume are reliable. We do not doubt its accuracy, however we do not guarantee it. No liability is assumed for errors and omissions. Information is subject to changes and withdrawal without notice.