



HEALEY BUILDING

Downtown Loft Office Space for Lease HISTORIC HEALEY BUILDING

Bounded by Broad Street, Walton Street, Forsyth Street & Poplar



Healey Building

57 Forsyth St NW
Atlanta, GA 30303

RATE: \$22.50 SF Full Service
SIZE: 2,179 - 4,844 Contiguous RSF

- Unique Turn of the Century Loft Office with Large Street View Windows Overlooking Broad Street.
- Adjacent to GA State University
- MARTA Rail & Street Car Access
- Located in the heart of the Opportunity Zone. For more information go to <https://dca.ga.gov/community-economic-development/incentives/opportunity-zones>
- Building on the National Register of Historic Places



Dave Smith

404.869.2605

dave@joelandgranot.com

For complete details, please visit: www.joelandgranot.com



JOEL & GRANOT
COMMERCIAL REAL ESTATE

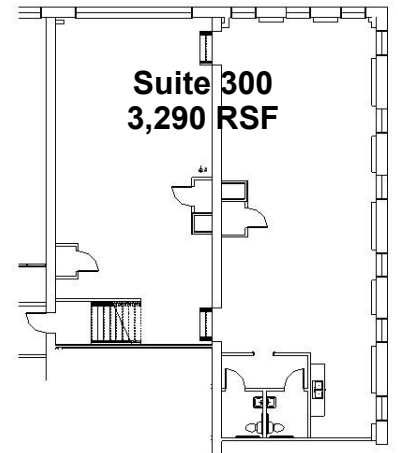
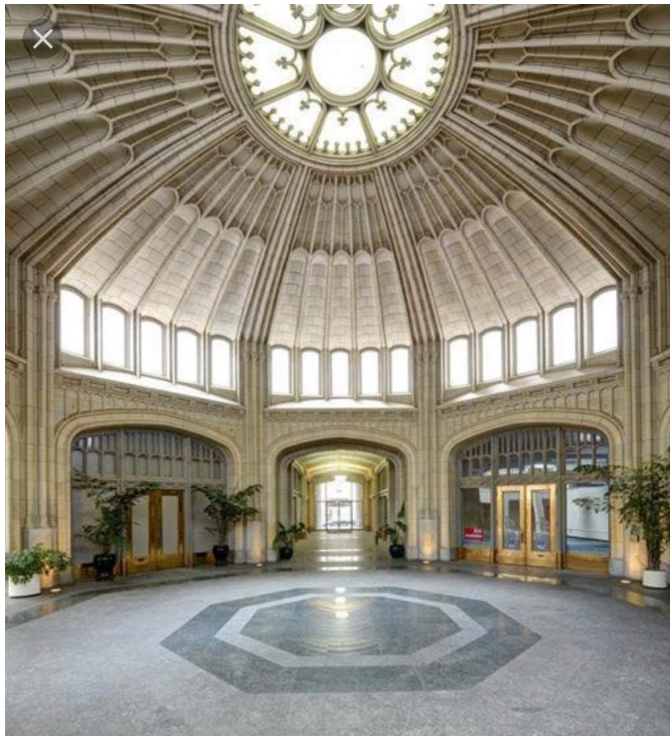
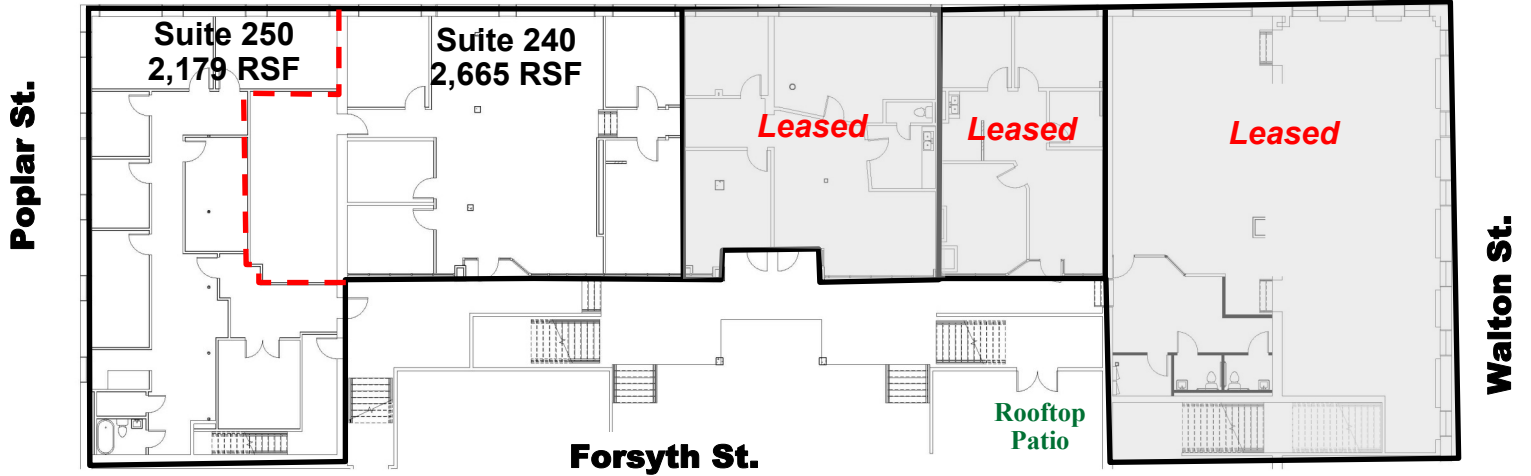
633 Antone St NW, Atlanta, GA 30318
(ph) 404.869.2600 | (fax) 404.869.2601

The information was obtained from sources we assume are reliable. We do not doubt its accuracy, however we do not guarantee it. No liability is assumed for errors and omissions. Information is subject to changes and withdrawal without notice.



HEALEY BUILDING

Healey Building Loft Office Floor Plan



Dave Smith
404.869.2605
dave@joelandgranot.com

For complete details, please visit: www.joelandgranot.com



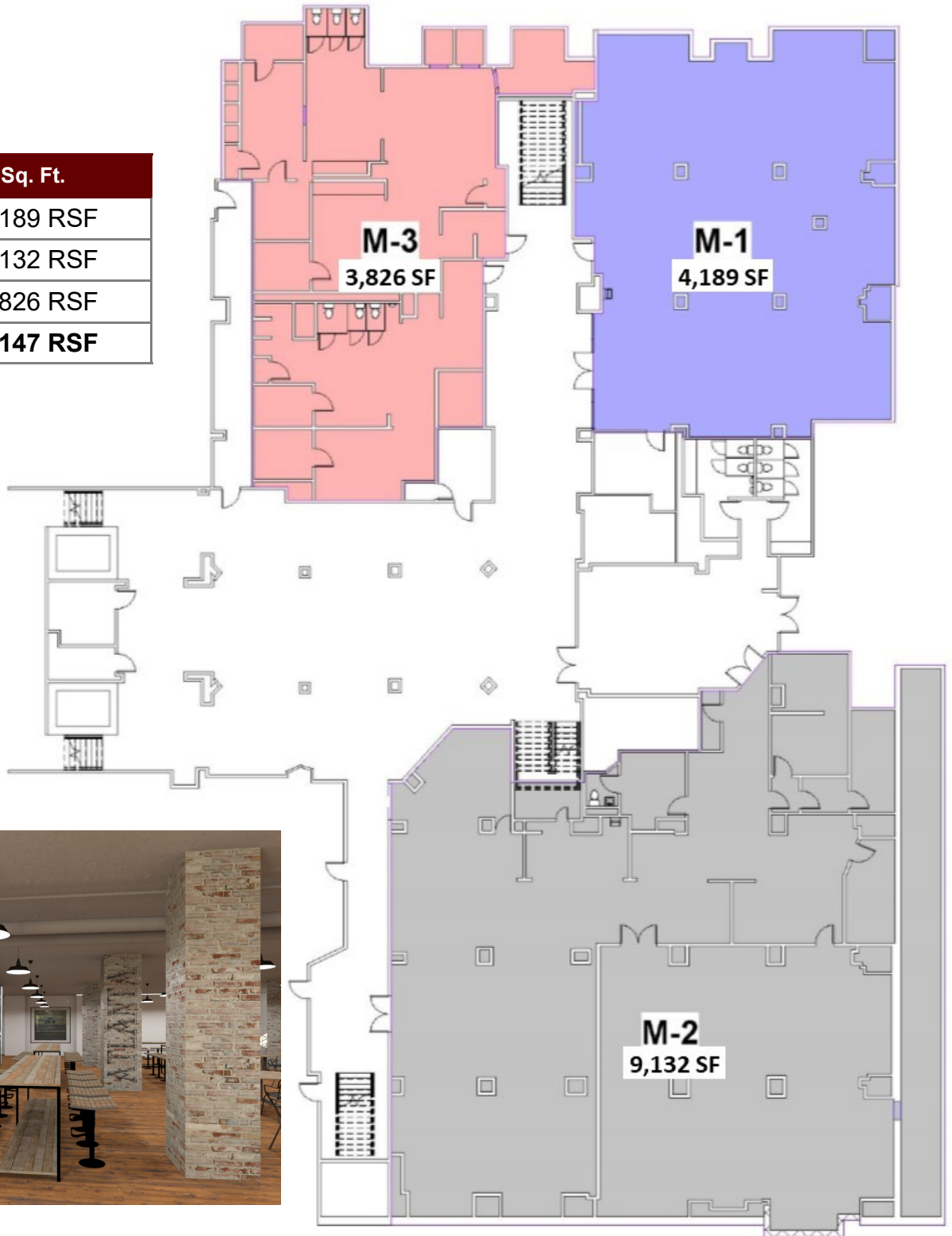
JOEL & GRANOT
COMMERCIAL REAL ESTATE

633 Antone St NW, Atlanta, GA 30318
(ph) 404.869.2600 | (fax) 404.869.2601

The information was obtained from sources we assume are reliable. We do not doubt its accuracy, however we do not guarantee it. No liability is assumed for errors and omissions. Information is subject to changes and withdrawal without notice.

Healey Building Market Level Floor Plan

| Market Level | Sq. Ft. |
|--------------|-------------------|
| M-1 | 4,189 RSF |
| M-2 | 9,132 RSF |
| M-3 | 3,826 RSF |
| TOTAL | 17,147 RSF |




For complete details, please visit: www.joelandgranot.com

633 Antone St NW, Atlanta, GA 30318
(ph) 404.869.2600 | (fax) 404.869.2601

The information was obtained from sources we assume are reliable. We do not doubt its accuracy, however we do not guarantee it. No liability is assumed for errors and omissions. Information is subject to changes and withdrawal without notice.

Healey Building Parking Map



| | Lot Name / Address | Rate | Distance from Healey Building |
|---|--------------------------------------|------------------------|-------------------------------|
| 1 | Compark 34 Broad Street | \$100 - \$125/Month | 75 Yards |
| 2 | Lanier Parking (55 Marietta St.) | \$95.00/Month | 0.1 Miles |
| 3 | AAA Parking (79 Marietta St.) | \$85.00/Month | 0.2 Miles |
| 4 | LAZ Parking (5 Decatur St.) | \$110.00/Month | 0.2 Miles |
| 5 | PCA 98 Cone St. (98 Cone St.) | \$75.00/Month | 0.3 Miles |
| 6 | Centennial Tower (110 Walton St.) | \$110.00/Month | 0.3 Miles |
| 7 | 717 Parking (156 Carnegie Way) | \$75.00/Month | 0.2 Miles |
| 8 | 123 Marietta | \$78.00/Month | 0.2 Miles |
|  | Peachtree Center MARTA Station | | 0.5 Miles |
|  | Five Points MARTA Station | | 0.2 Miles |

Dave Smith

404.869.2605

dave@joelandgranot.com

For complete details, please visit: www.joelandgranot.com



JOEL & GRANOT

COMMERCIAL REAL ESTATE

962 Howell Mill Road, Atlanta, GA 30318
(ph) 404.869.2600 | (fax) 404.869.2601

The information was obtained from sources we assume are reliable. We do not doubt its accuracy, however we do not guarantee it. No liability is assumed for errors and omissions. Information is subject to changes and withdrawal without notice.