

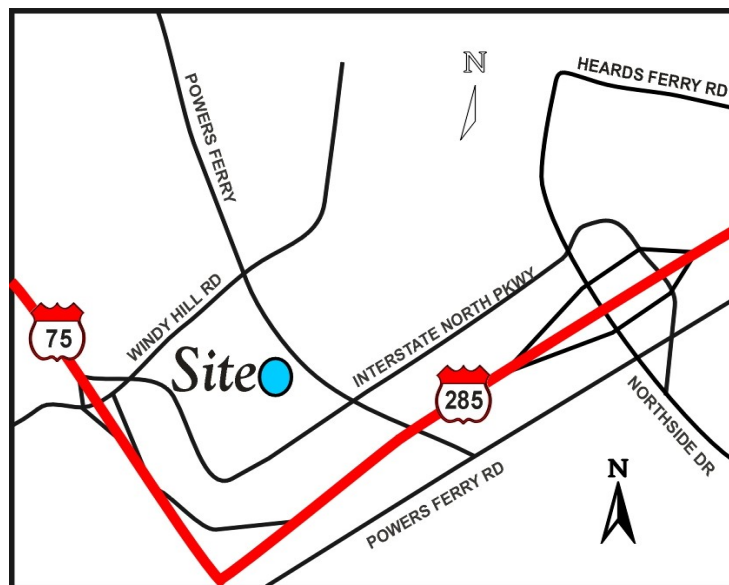
# For Sublease - Galleria/Cumberland Market Plug & Go Law Firm/Professional Services Space



**Shadowood Office Park**  
2110 Powers Ferry Road  
Atlanta, GA 30339

**Size: 1,849 RSF**  
**Sublease Rate: \$15.75/RSF Full Service**  
**Term: Through 1/31/2020**

- Corner Office with 5 Offices on Glass
- Ideal for Law Office / Professional Services Firm
- Furniture Can Be Included
- Available Immediately
- Brokers Protected



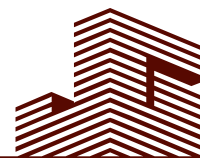
**Ted Schwartz**

404.869.2606

ted@joelandgranot.com

For complete details, please visit: [www.joelandgranot.com](http://www.joelandgranot.com)

962 Howell Mill Road, Atlanta, GA 30318  
(ph) 404.869.2600 | (fax) 404.869.2601

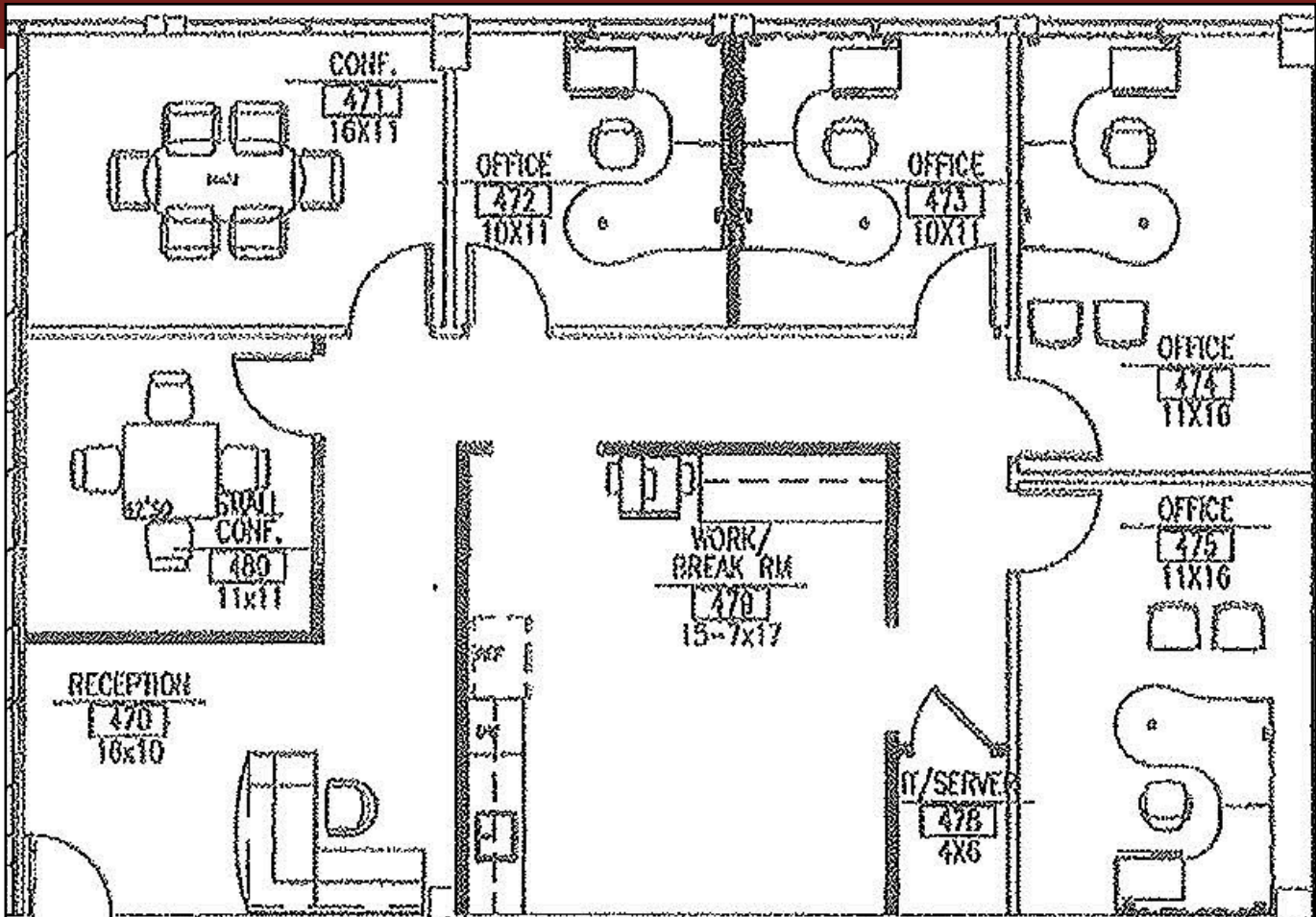


**JOEL & GRANOT**  
COMMERCIAL REAL ESTATE

The information was obtained from sources we assume are reliable. We do not doubt its accuracy, however we do not guarantee it. No liability is assumed for errors and omissions. Information is subject to changes and withdrawal without notice.

# Shadowood Office Park—2110 Powers Ferry Rd.

## Suite 470 Floor Plan



962 Howell Mill Road, Atlanta, GA 30318  
(ph) 404.869.2600 | (fax) 404.869.2601

The information was obtained from sources we assume are reliable. We do not doubt its accuracy, however we do not guarantee it. No liability is assumed for errors and omissions. Information is subject to changes and withdrawal without notice.